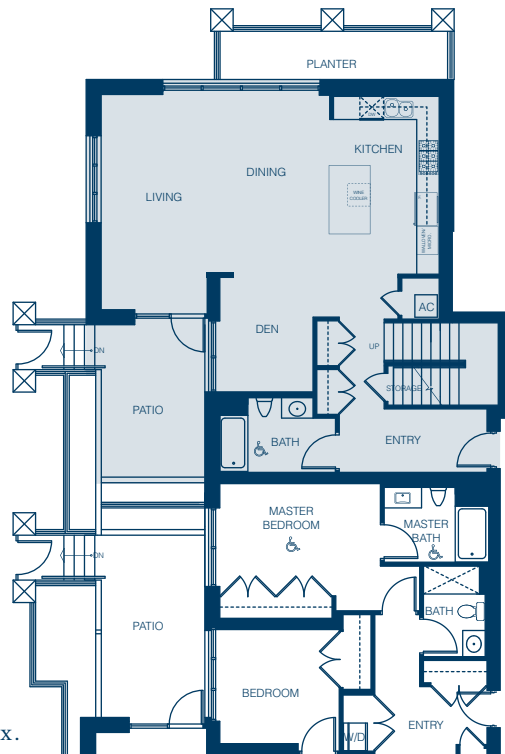
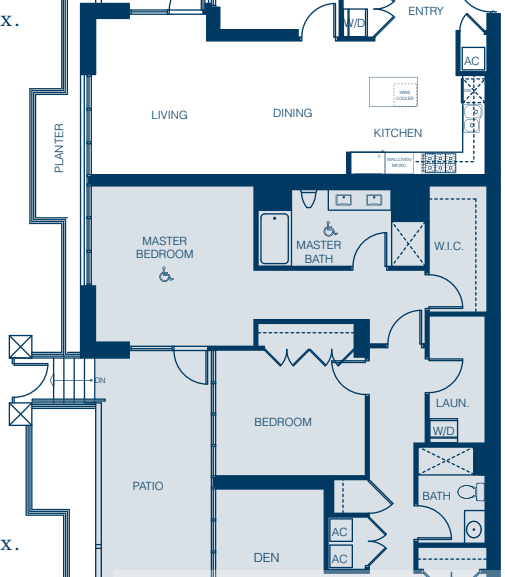


All reference to square footage or floor area are approximate and are based upon the gross square footage of the Residential Units shown on the architectural plans. The actual square footage of the Residential Units will be less than the gross square footage. Buyer should not rely upon any advertising materials to determine the size of Buyer's Residential Unit. Only the as-built condition will determine the square footage of Buyer's Condominium. All renderings, floor plans and site plans shown in the sales office, brochures and other advertising materials are approximate illustrations only and are subject to change.

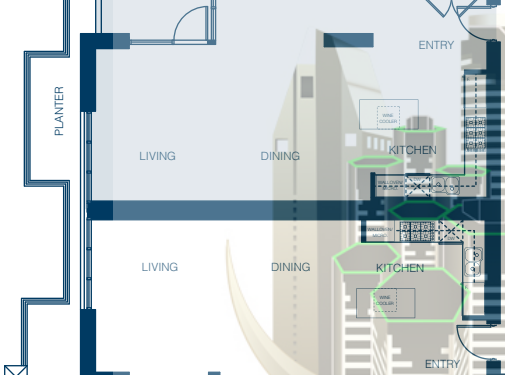
TYPE A6  
SUITE 107  
2 BEDROOM + DEN  
1,834 SQ. FT. APPROX.  
main level



TYPE A1  
SUITE 106  
2 BEDROOM  
1,115 SQ. FT. APPROX.



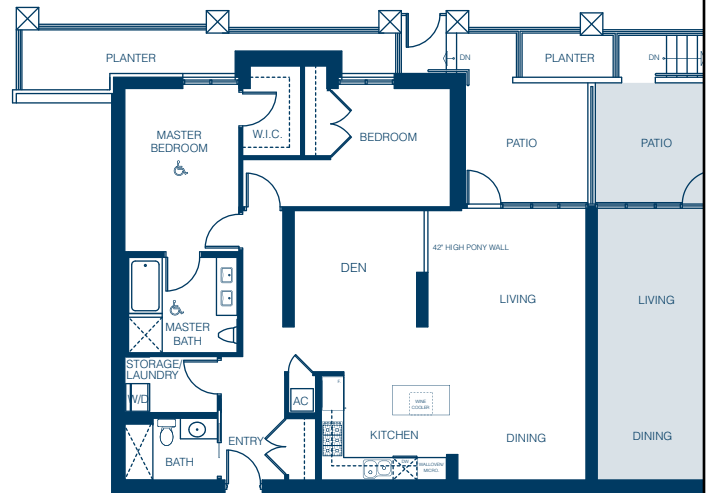
TYPE A3  
SUITE 105  
2 BEDROOM + DEN  
1,717 SQ. FT. APPROX.



TYPE A1  
SUITE 104  
2 BEDROOM  
1,473 SQ. FT. APPROX.

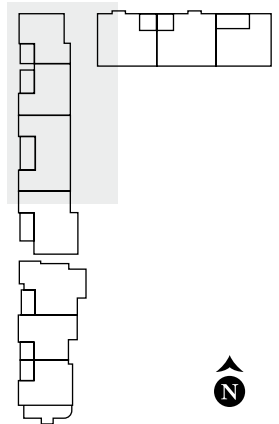


TYPE A2  
SUITE 108  
2 BEDROOM + DEN  
1,435 SQ. FT. APPROX.



BAYSIDE  
at the Embarcadero

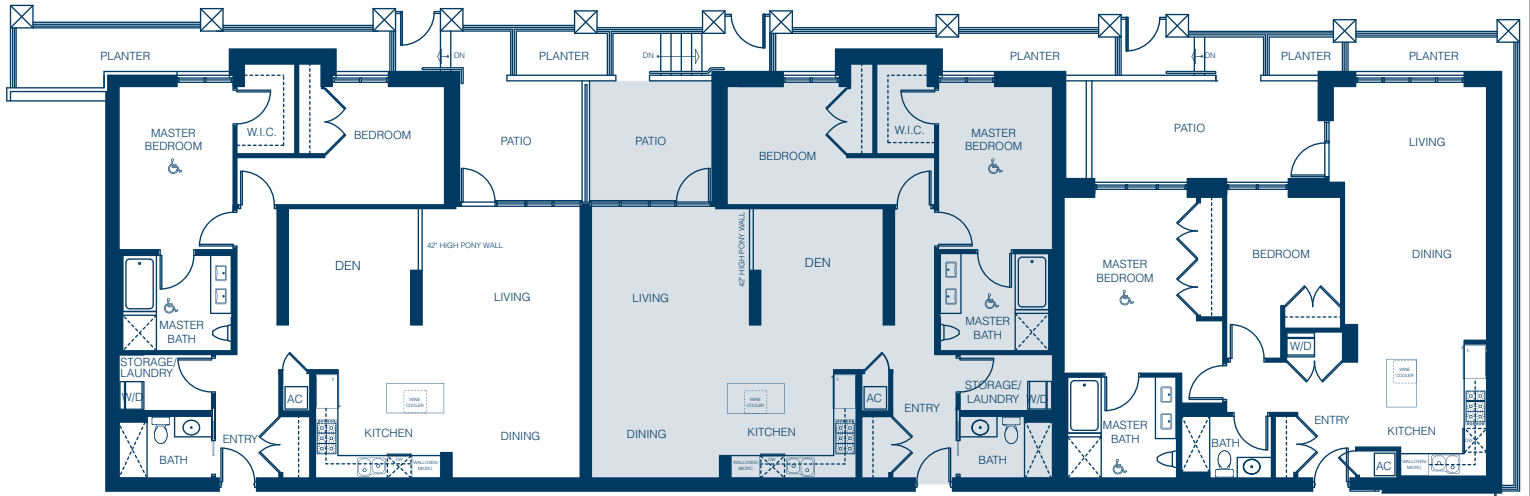
## LEVEL 1 SECTION A



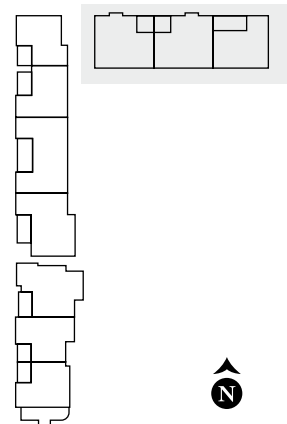
TYPE A2  
SUITE 108  
2 BEDROOM + DEN  
1,435 SQ. FT. APPROX.

TYPE A2  
SUITE 109  
2 BEDROOM + DEN  
1,431 SQ. FT. APPROX.

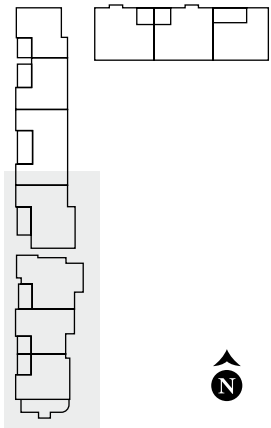
TYPE A1  
SUITE 110  
2 BEDROOM  
1,211 SQ. FT. APPROX.



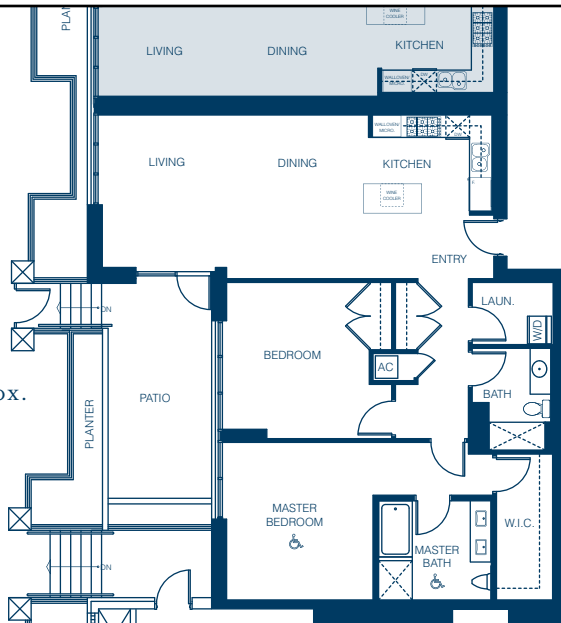
## LEVEL 1 SECTION B



# LEVEL 1 SECTION C



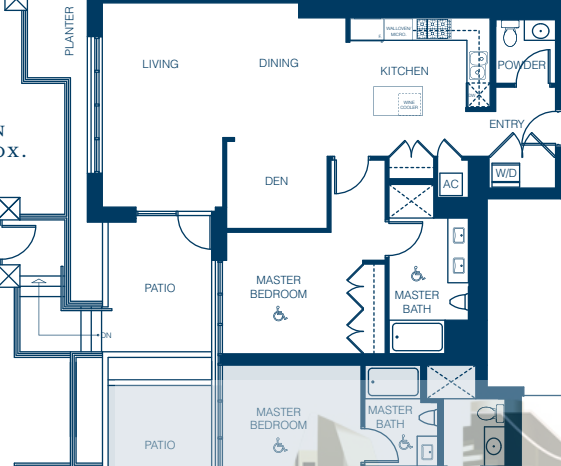
**TYPE A1**  
SUITE 104  
2 BEDROOM  
1,473 SQ. FT. APPROX.



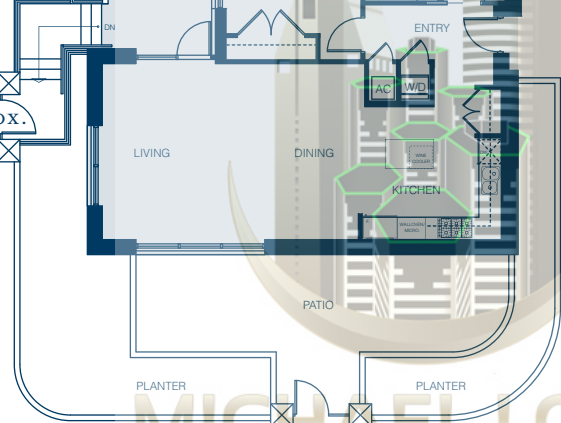
**TYPE A4**  
SUITE 103  
1 BEDROOM + DEN  
1,448 SQ. FT. APPROX.

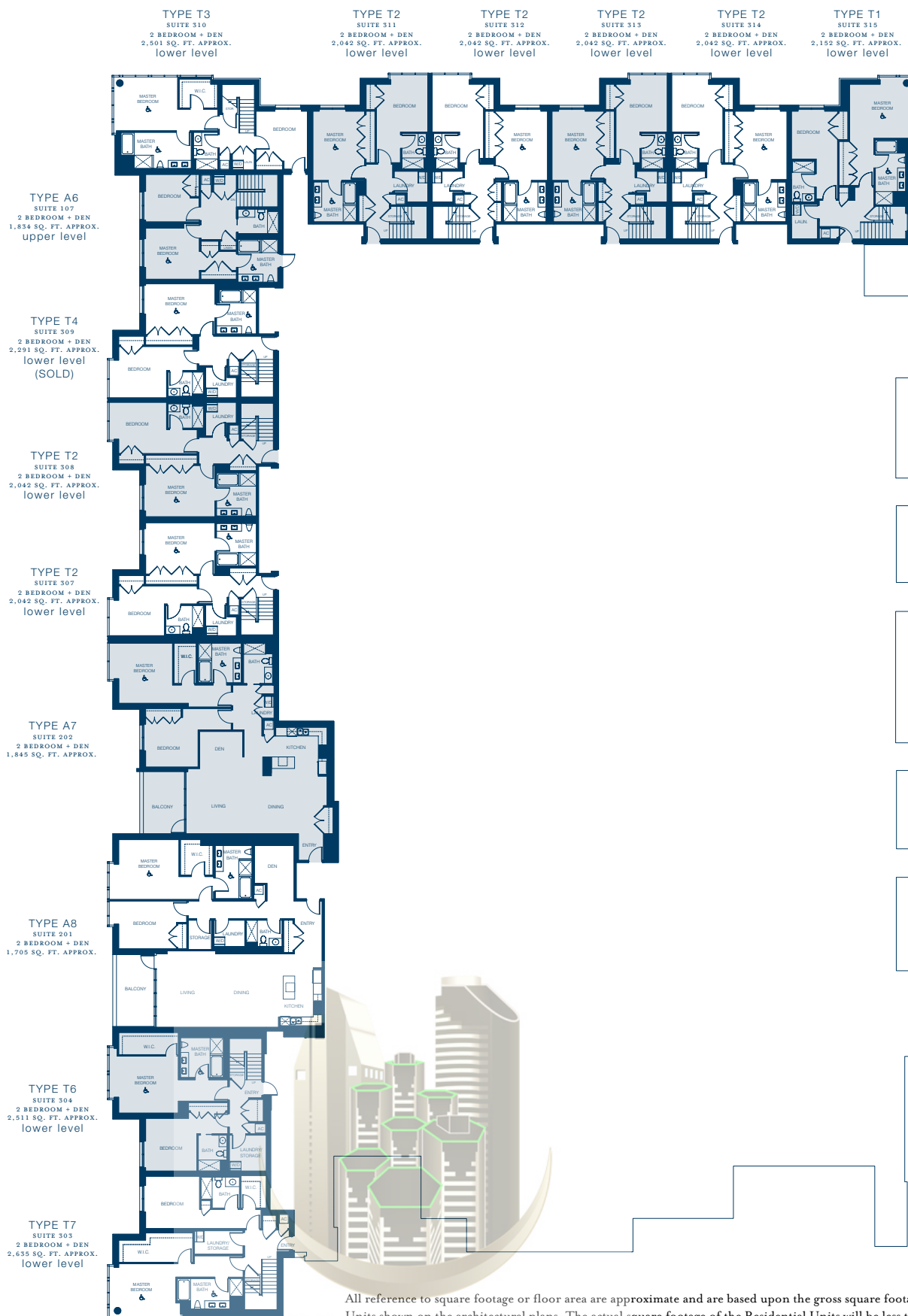


**TYPE A4**  
SUITE 102  
1 BEDROOM + DEN  
1,101 SQ. FT. APPROX.



**TYPE A5**  
SUITE 101  
1 BEDROOM  
1,031 SQ. FT. APPROX.





All reference to square footage or floor area are approximate and are based upon the gross square footage of the Residential Units shown on the architectural plans. The actual square footage of the Residential Units will be less than the gross square footage. Buyer should not rely upon any advertising materials to determine the size of Buyer's Residential Unit. Only the as-built condition will determine the square footage of Buyer's Condominium. All renderings, floor plans and site plans shown in the sales office, brochures and other advertising materials are approximate illustrations only and are subject to change.

TYPE T3  
SUITE 310  
2 BEDROOM + DEN  
2,501 SQ. FT. APPROX.  
lower level

TYPE T2  
SUITE 311  
2 BEDROOM + DEN  
2,042 SQ. FT. APPROX.  
lower level

TYPE T2  
SUITE 312  
2 BEDROOM + DEN  
2,042 SQ. FT. APPROX.  
lower level

2  
2,04

TYPE A6  
SUITE 107  
2 BEDROOM + DEN  
1,834 SQ. FT. APPROX.  
upper level

TYPE T4  
SUITE 309  
2 BEDROOM + DEN  
2,291 SQ. FT. APPROX.  
lower level  
(SOLD)

TYPE T2  
SUITE 308  
2 BEDROOM + DEN  
2,042 SQ. FT. APPROX.  
lower level

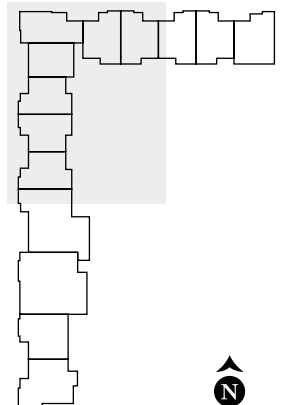
TYPE T2  
SUITE 307  
2 BEDROOM + DEN  
2,042 SQ. FT. APPROX.  
lower level

TYPE A7  
SUITE 202  
2 BEDROOM + DEN  
1,845 SQ. FT. APPROX.



BAYSIDE  
at the Embarcadero

## LEVEL 2 SECTION A



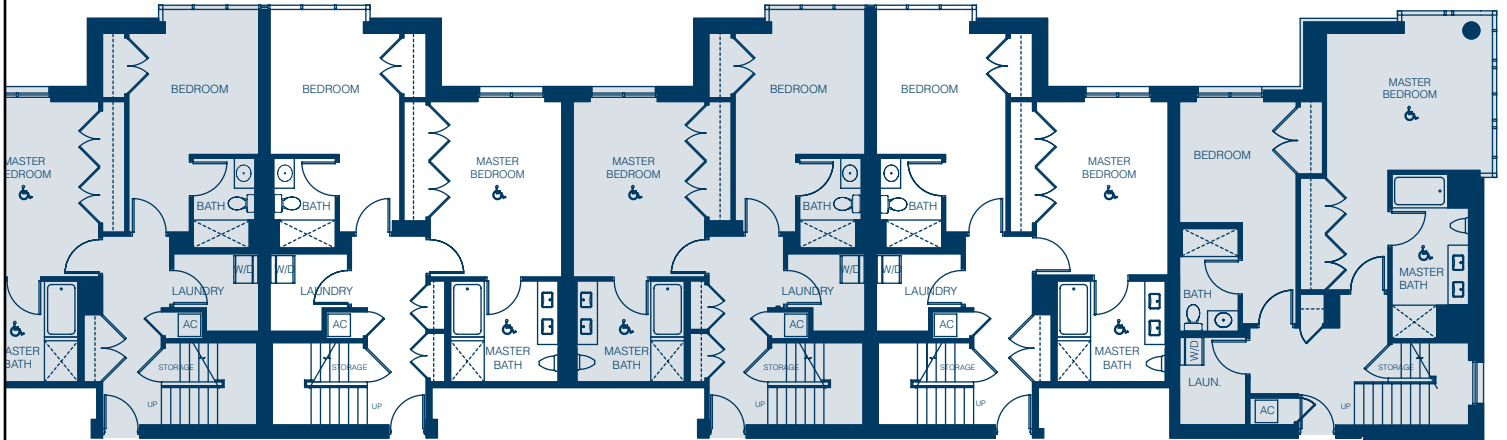
TYPE T2  
SUITE 311  
2 BEDROOM + DEN  
2,042 SQ. FT. APPROX.  
lower level

TYPE T2  
SUITE 312  
2 BEDROOM + DEN  
2,042 SQ. FT. APPROX.  
lower level

TYPE T2  
SUITE 313  
2 BEDROOM + DEN  
2,042 SQ. FT. APPROX.  
lower level

TYPE T2  
SUITE 314  
2 BEDROOM + DEN  
2,042 SQ. FT. APPROX.  
lower level

TYPE T1  
SUITE 315  
2 BEDROOM + DEN  
2,152 SQ. FT. APPROX.  
lower level



**BAYSIDE**  
at the Embarcadero

**LEVEL 2**  
SECTION B

**N**



TYPE T2  
SUITE 307  
2 BEDROOM + DEN  
2,042 SQ. FT. APPROX.  
lower level

TYPE A7  
SUITE 202  
2 BEDROOM + DEN  
1,845 SQ. FT. APPROX.

TYPE A8  
SUITE 201  
2 BEDROOM + DEN  
1,705 SQ. FT. APPROX.

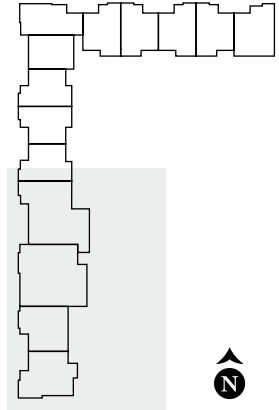
TYPE T6  
SUITE 304  
2 BEDROOM + DEN  
2,511 SQ. FT. APPROX.  
lower level

TYPE T7  
SUITE 303  
2 BEDROOM + DEN  
2,635 SQ. FT. APPROX.  
lower level

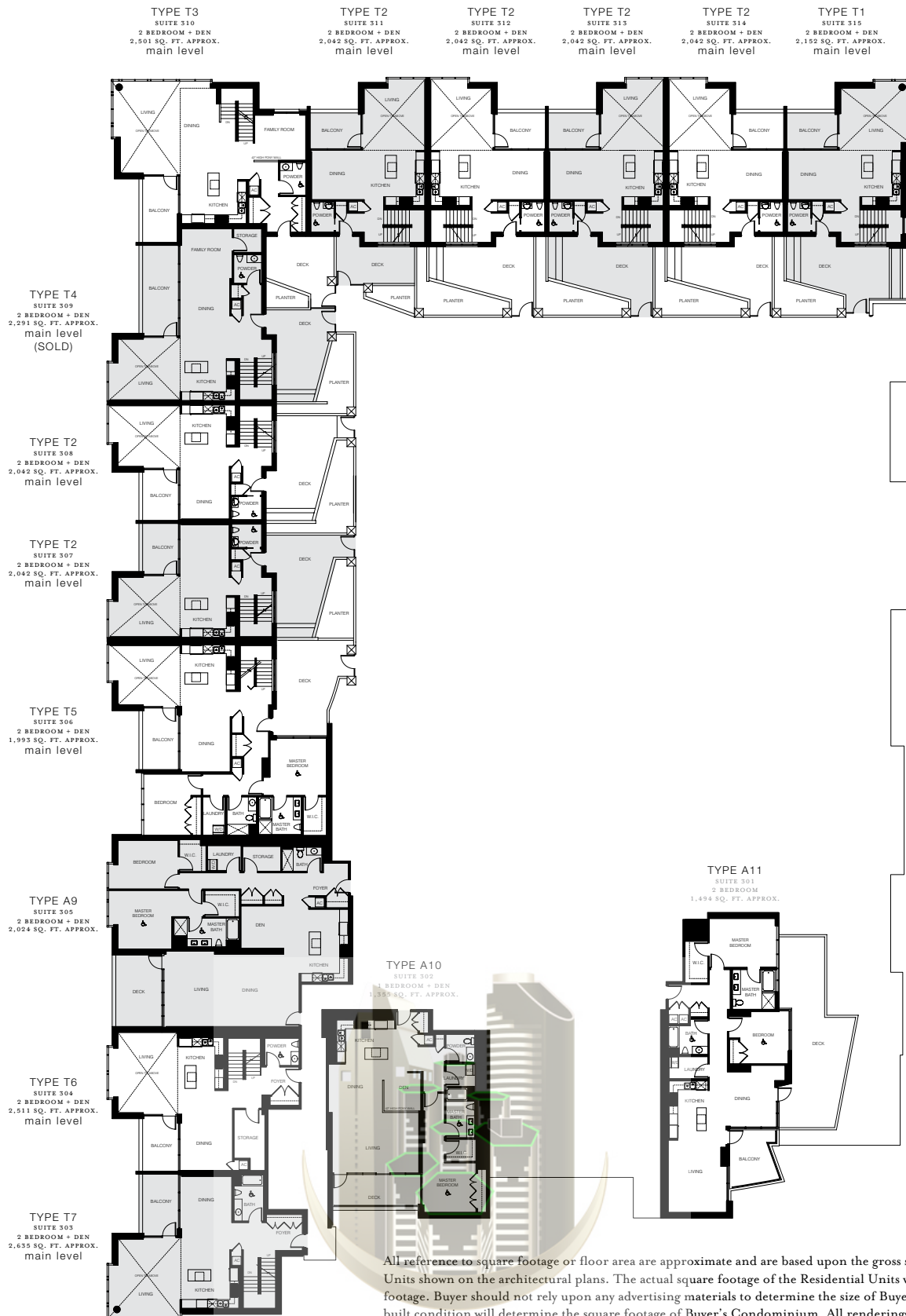


BAYSIDE  
at the Embarcadero

## LEVEL 2 SECTION 3







All reference to square footage or floor area are approximate and are based upon the gross square footage of the Residential Units shown on the architectural plans. The actual square footage of the Residential Units will be less than the gross square footage. Buyer should not rely upon any advertising materials to determine the size of Buyer's Residential Unit. Only the as-built condition will determine the square footage of Buyer's Condominium. All renderings, floor plans and site plans shown in the sales office, brochures and other advertising materials are approximate illustrations only and are subject to change.

TYPE T3  
SUITE 310  
2 BEDROOM + DEN  
2,501 SQ. FT. APPROX.  
main level

TYPE T2  
SUITE 311  
2 BEDROOM + DEN  
2,042 SQ. FT. APPROX.  
main level

TYPE T2  
SUITE 312  
2 BEDROOM + DEN  
2,042 SQ. FT. APPROX.  
main level

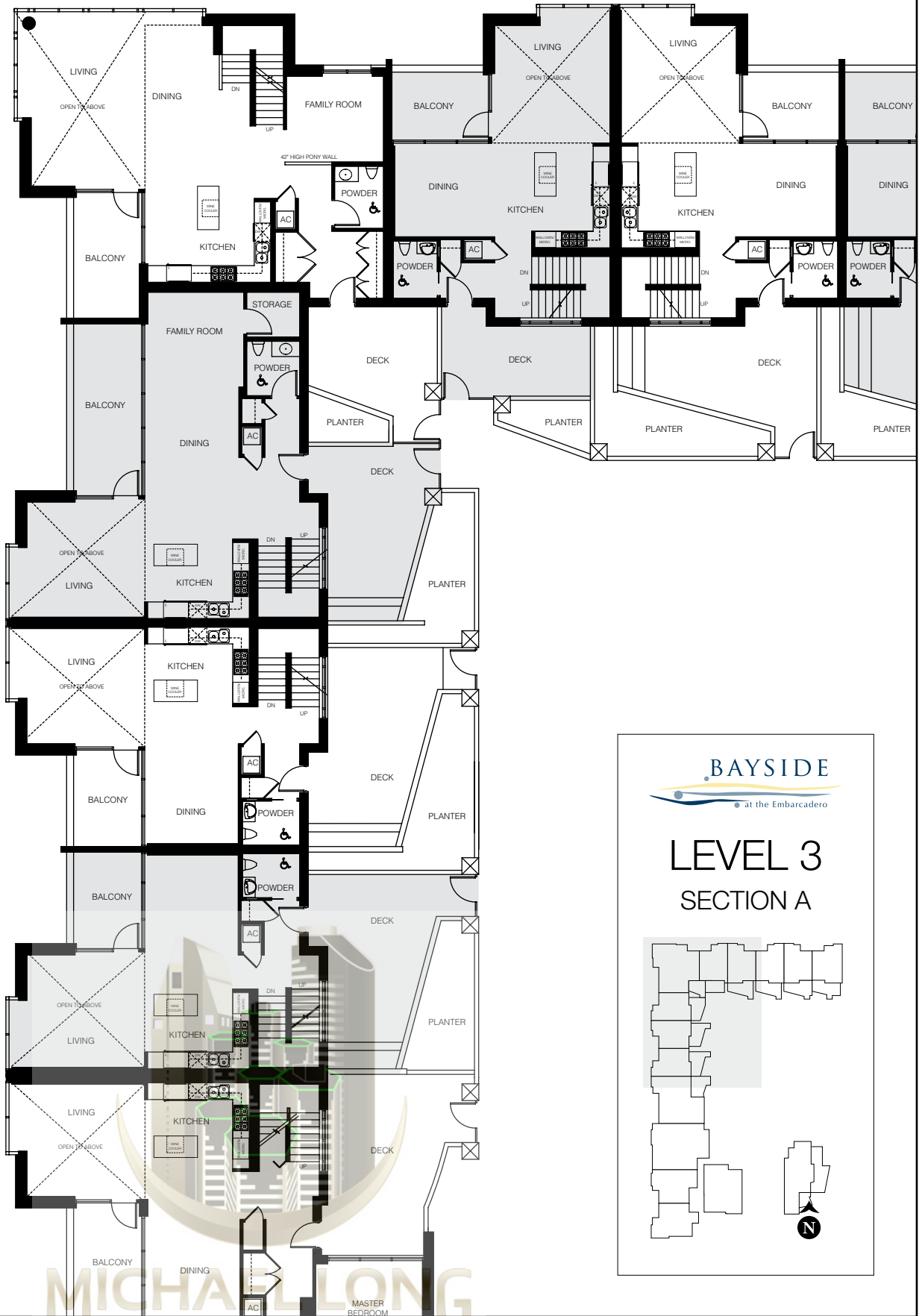
2 BE  
2,042  
m

TYPE T4  
SUITE 309  
2 BEDROOM + DEN  
2,291 SQ. FT. APPROX.  
main level  
(SOLD)

TYPE T2  
SUITE 308  
2 BEDROOM + DEN  
2,042 SQ. FT. APPROX.  
main level

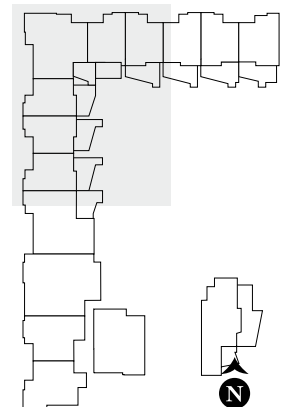
TYPE T2  
SUITE 307  
2 BEDROOM + DEN  
2,042 SQ. FT. APPROX.  
main level

TYPE T5  
SUITE 306  
2 BEDROOM + DEN  
1,993 SQ. FT. APPROX.  
main level



BAYSIDE  
at the Embarcadero

LEVEL 3  
SECTION A



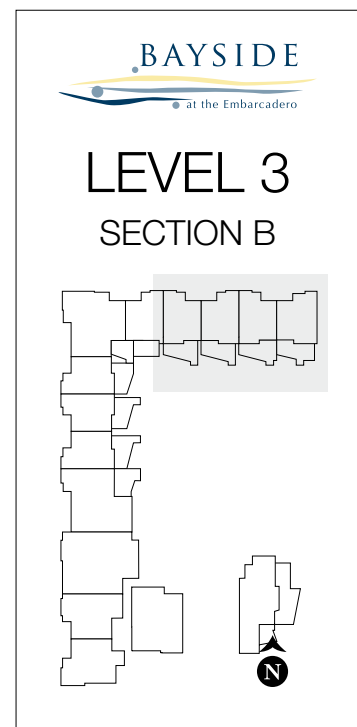
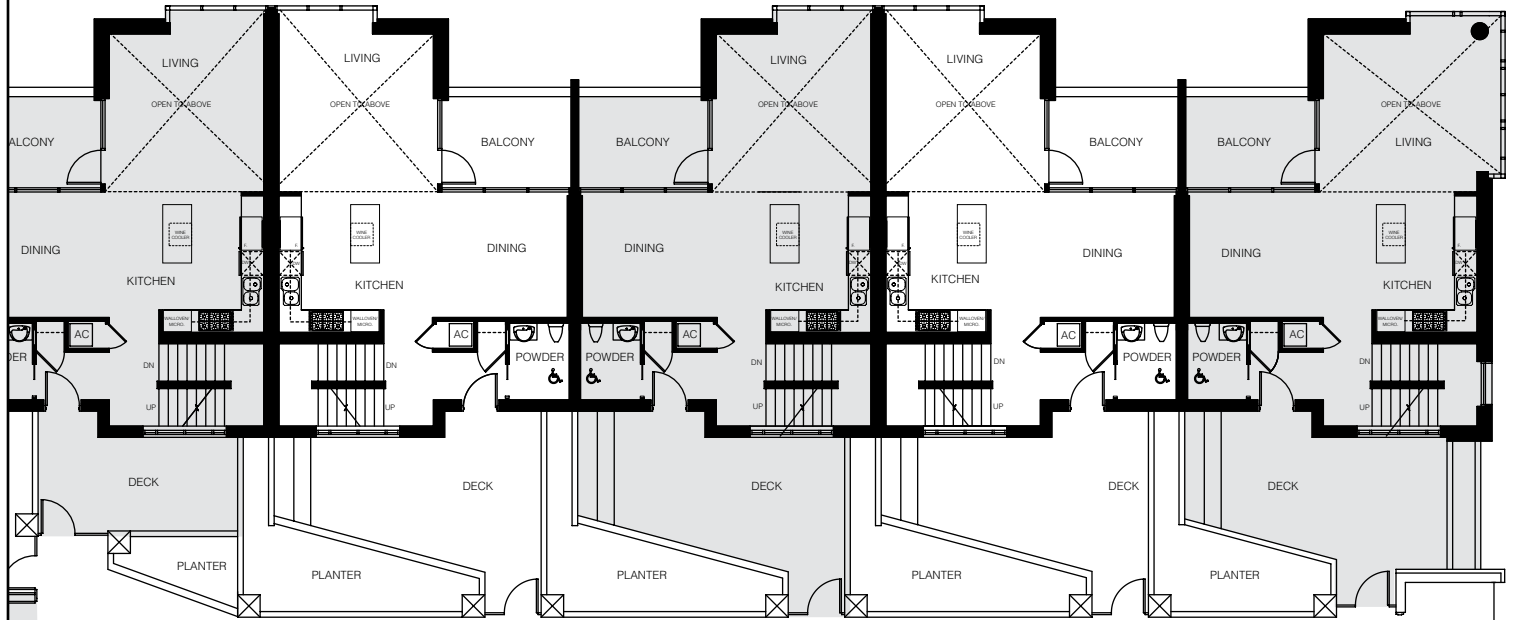
TYPE T2  
SUITE 311  
2 BEDROOM + DEN  
0,42 SQ. FT. APPROX.  
main level

TYPE T2  
SUITE 312  
2 BEDROOM + DEN  
2,042 SQ. FT. APPROX.  
main level

TYPE T2  
SUITE 313  
2 BEDROOM + DEN  
2,042 SQ. FT. APPROX.  
main level

TYPE T2  
SUITE 314  
2 BEDROOM + DEN  
2,042 SQ. FT. APPROX.  
main level

TYPE T1  
SUITE 315  
2 BEDROOM + DEN  
2,152 SQ. FT. APPROX.  
main level



SUITE 307  
2 BEDROOM + DEN  
2,042 SQ. FT. APPROX.  
main level

TYPE T5  
SUITE 306  
2 BEDROOM + DEN  
1,993 SQ. FT. APPROX.  
main level

TYPE A9  
SUITE 305  
2 BEDROOM + DEN  
2,024 SQ. FT. APPROX.

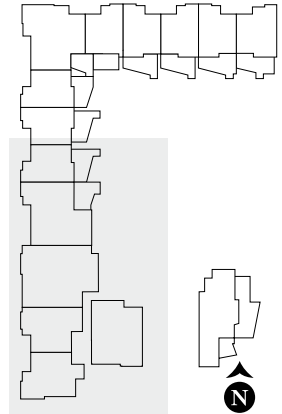
TYPE T6  
SUITE 304  
2 BEDROOM + DEN  
2,511 SQ. FT. APPROX.  
main level

TYPE T7  
SUITE 303  
2 BEDROOM + DEN  
2,635 SQ. FT. APPROX.  
main level

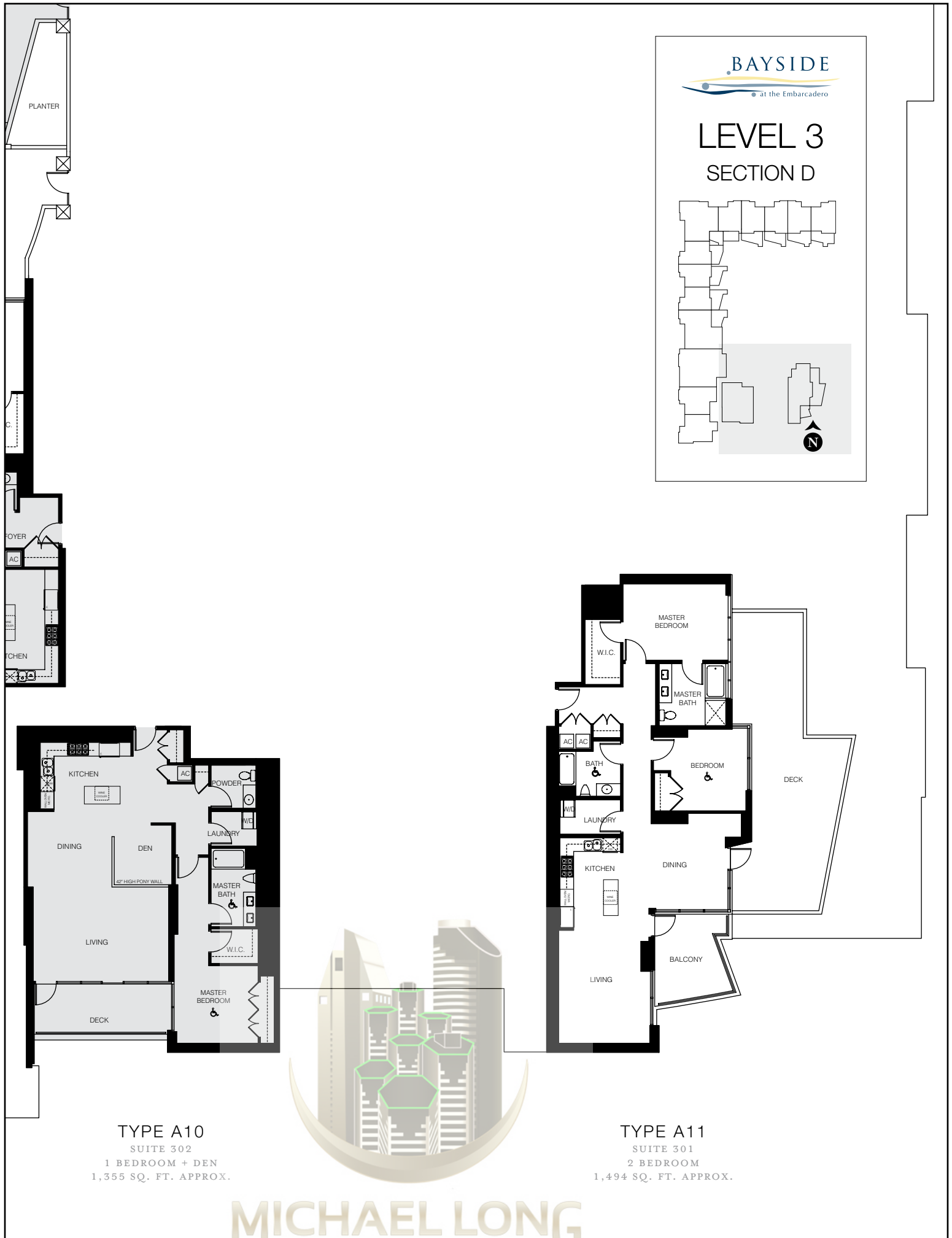


BAYSIDE  
at the Embarcadero

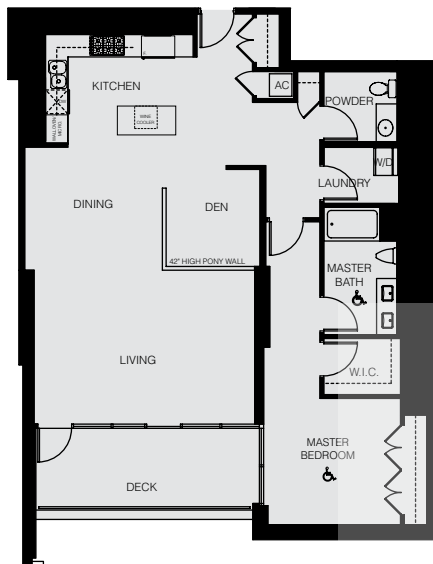
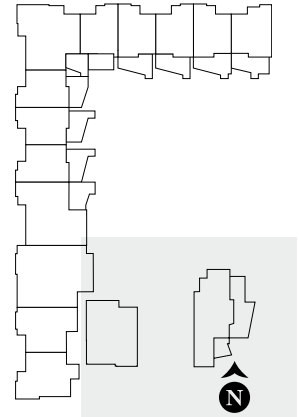
## LEVEL 3 SECTION C



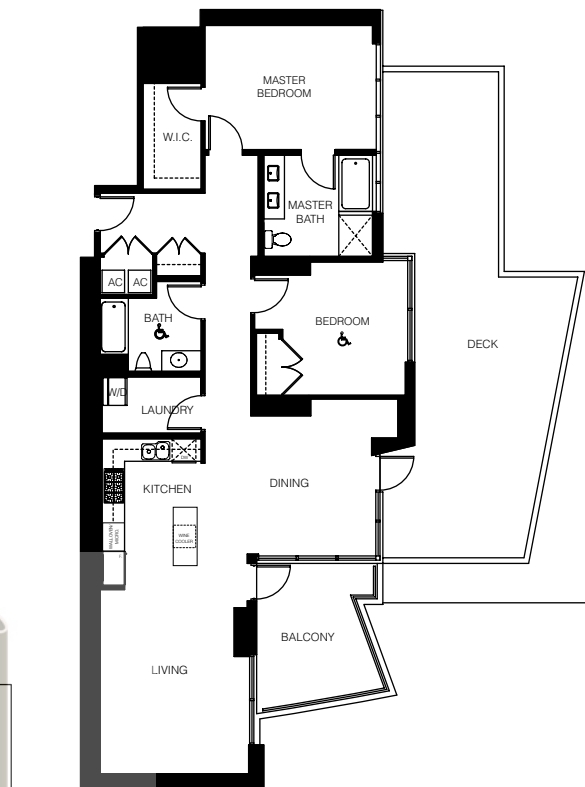
TYPE A10  
SUITE 302  
1 BEDROOM + DEN  
1,355 SQ. FT. APPROX.



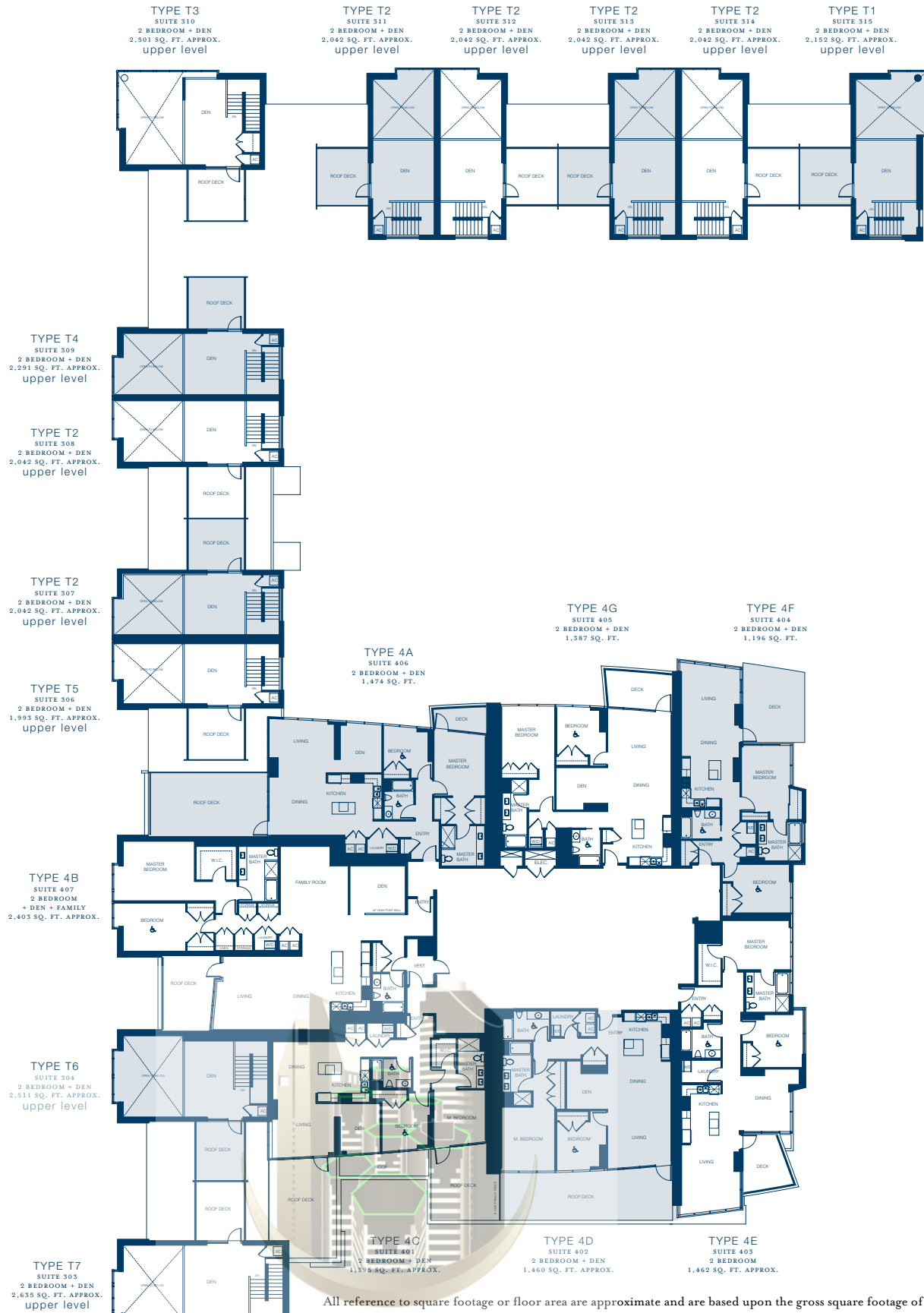
## LEVEL 3 SECTION D



TYPE A10  
SUITE 302  
1 BEDROOM + DEN  
1,355 SQ. FT. APPROX.

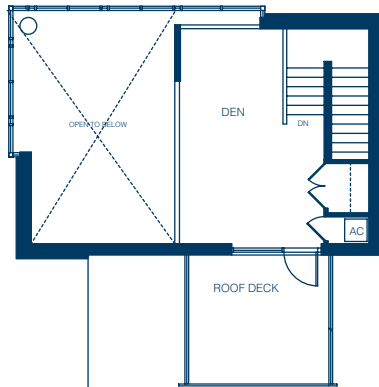


TYPE A11  
SUITE 301  
2 BEDROOM  
1,494 SQ. FT. APPROX.

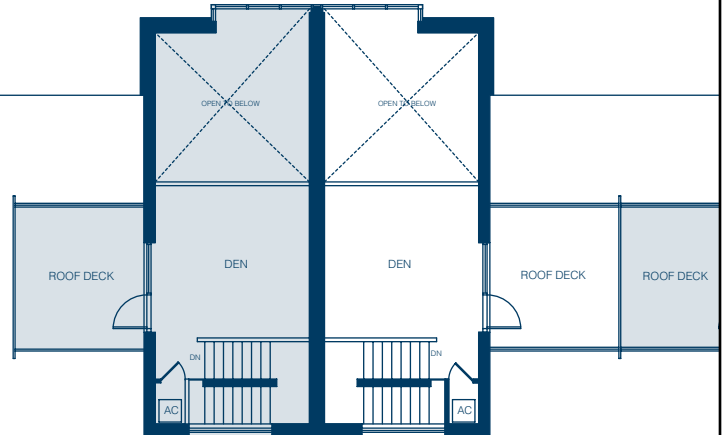


All reference to square footage or floor area are approximate and are based upon the gross square footage of the Residential Units shown on the architectural plans. The actual square footage of the Residential Units will be less than the gross square footage. Buyer should not rely upon any advertising materials to determine the size of Buyer's Residential Unit. Only the as-built condition will determine the square footage of Buyer's Condominium. All renderings, floor plans and site plans shown in the sales office, brochures and other advertising materials are approximate illustrations only and are subject to change.

TYPE T3  
SUITE 310  
2 BEDROOM + DEN  
2,501 SQ. FT. APPROX.  
upper level



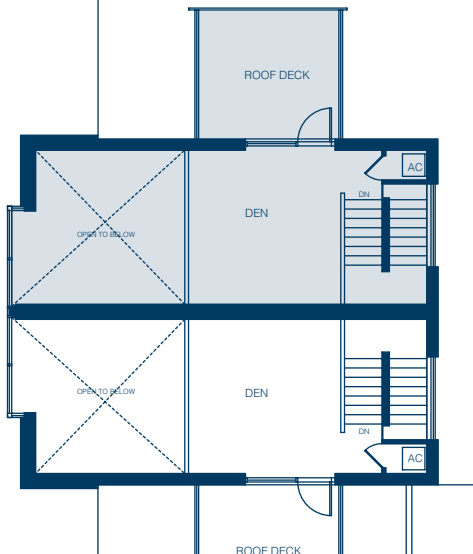
TYPE T2  
SUITE 311  
2 BEDROOM + DEN  
2,042 SQ. FT. APPROX.  
upper level



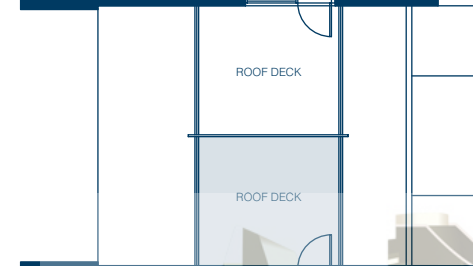
TYPE T2  
SUITE 312  
2 BEDROOM + DEN  
2,042 SQ. FT. APPROX.  
upper level

TYPE T2  
SUITE 313  
2 BEDROOM + DEN  
2,042 SQ. FT. APPROX.  
upper level

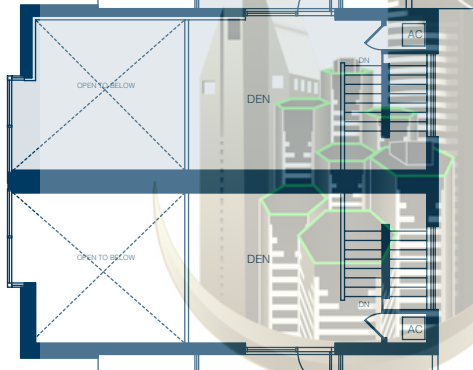
TYPE T4  
SUITE 309  
2 BEDROOM + DEN  
2,291 SQ. FT. APPROX.  
upper level



TYPE T2  
SUITE 308  
2 BEDROOM + DEN  
2,042 SQ. FT. APPROX.  
upper level



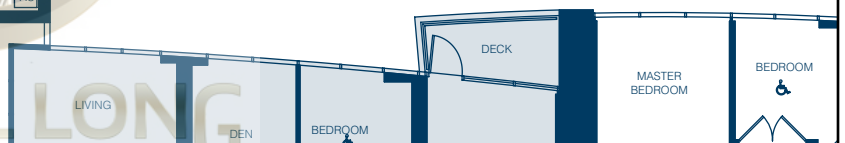
TYPE T2  
SUITE 307  
2 BEDROOM + DEN  
2,042 SQ. FT. APPROX.  
upper level



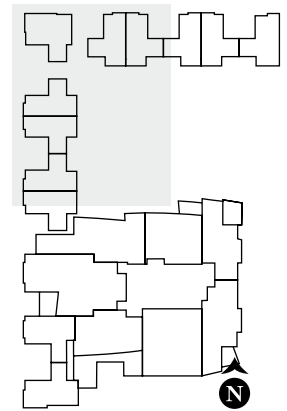
TYPE T5  
SUITE 306  
2 BEDROOM + DEN  
1,993 SQ. FT. APPROX.  
upper level



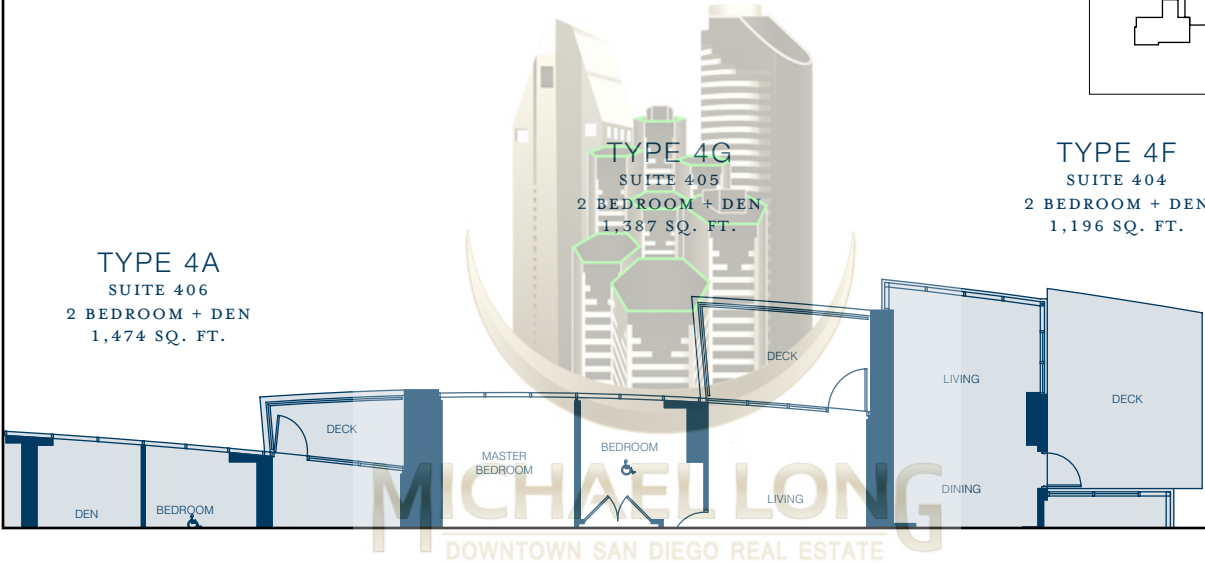
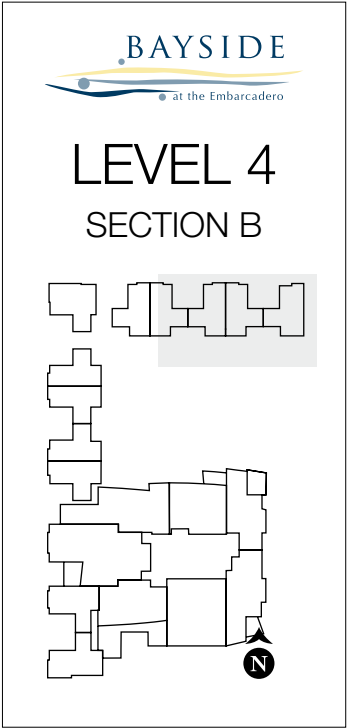
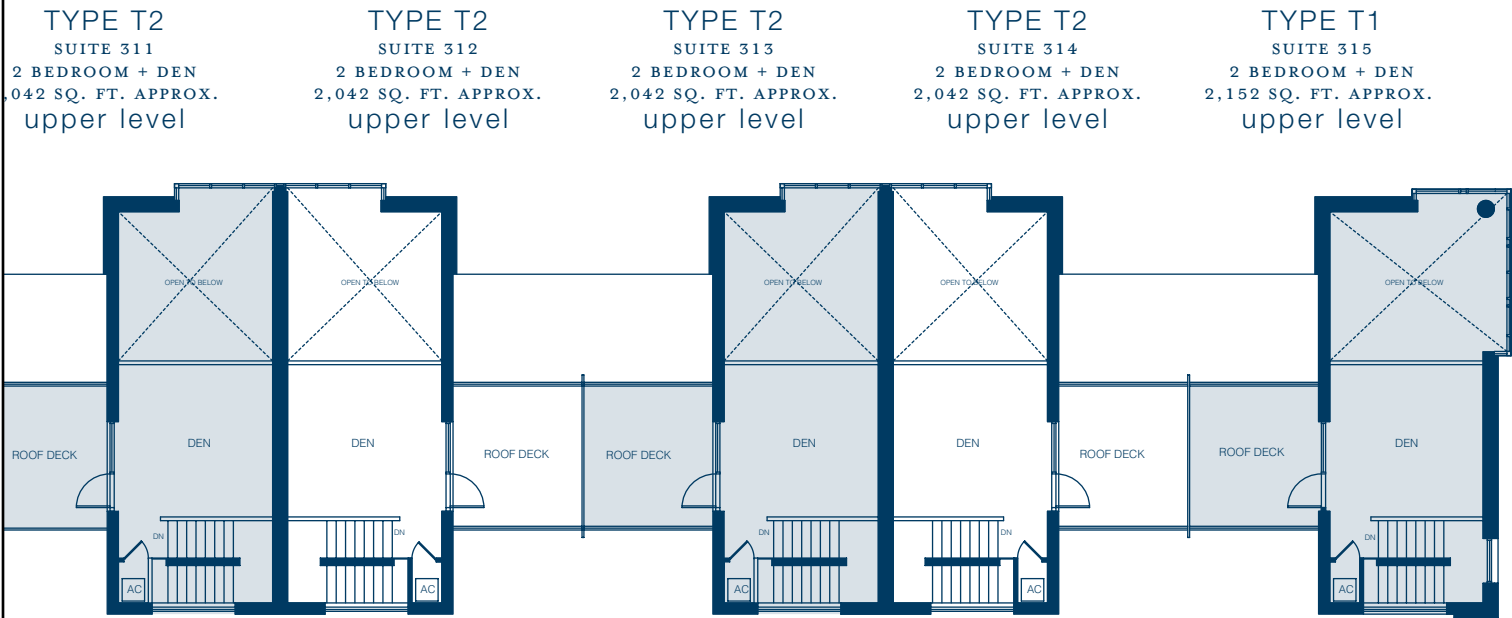
TYPE 4A  
SUITE 406  
2 BEDROOM + DEN  
1,474 SQ. FT.



## LEVEL 4 SECTION A



TYPE  
SUITE  
2 BEDROOM + DEN  
1,387 SQ. FT.





TYPE T2  
SUITE 307  
2 BEDROOM + DEN  
2,042 SQ. FT. APPROX.  
upper level

TYPE T5  
SUITE 306  
2 BEDROOM + DEN  
1,993 SQ. FT. APPROX.  
upper level

TYPE 4B  
SUITE 407  
2 BEDROOM  
+ DEN + FAMILY  
2,403 SQ. FT. APPROX.

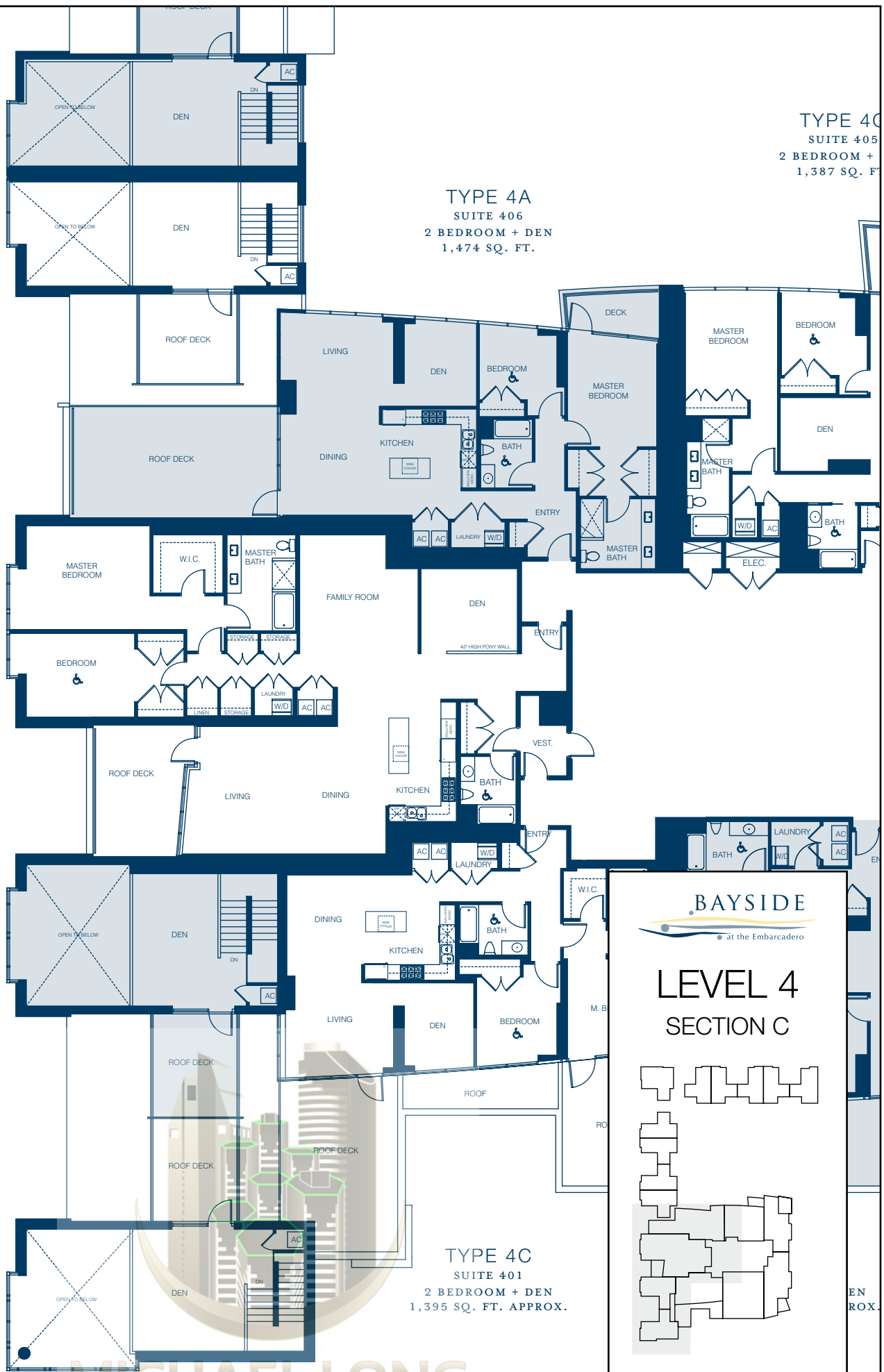
TYPE T6  
SUITE 304  
2 BEDROOM + DEN  
2,511 SQ. FT. APPROX.  
upper level

TYPE T7  
SUITE 303  
2 BEDROOM + DEN  
2,635 SQ. FT. APPROX.  
upper level

TYPE 4C  
SUITE 405  
2 BEDROOM +  
1,387 SQ. FT.

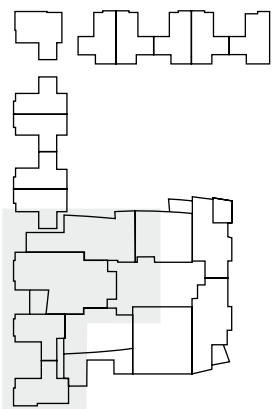
TYPE 4A  
SUITE 406  
2 BEDROOM + DEN  
1,474 SQ. FT.

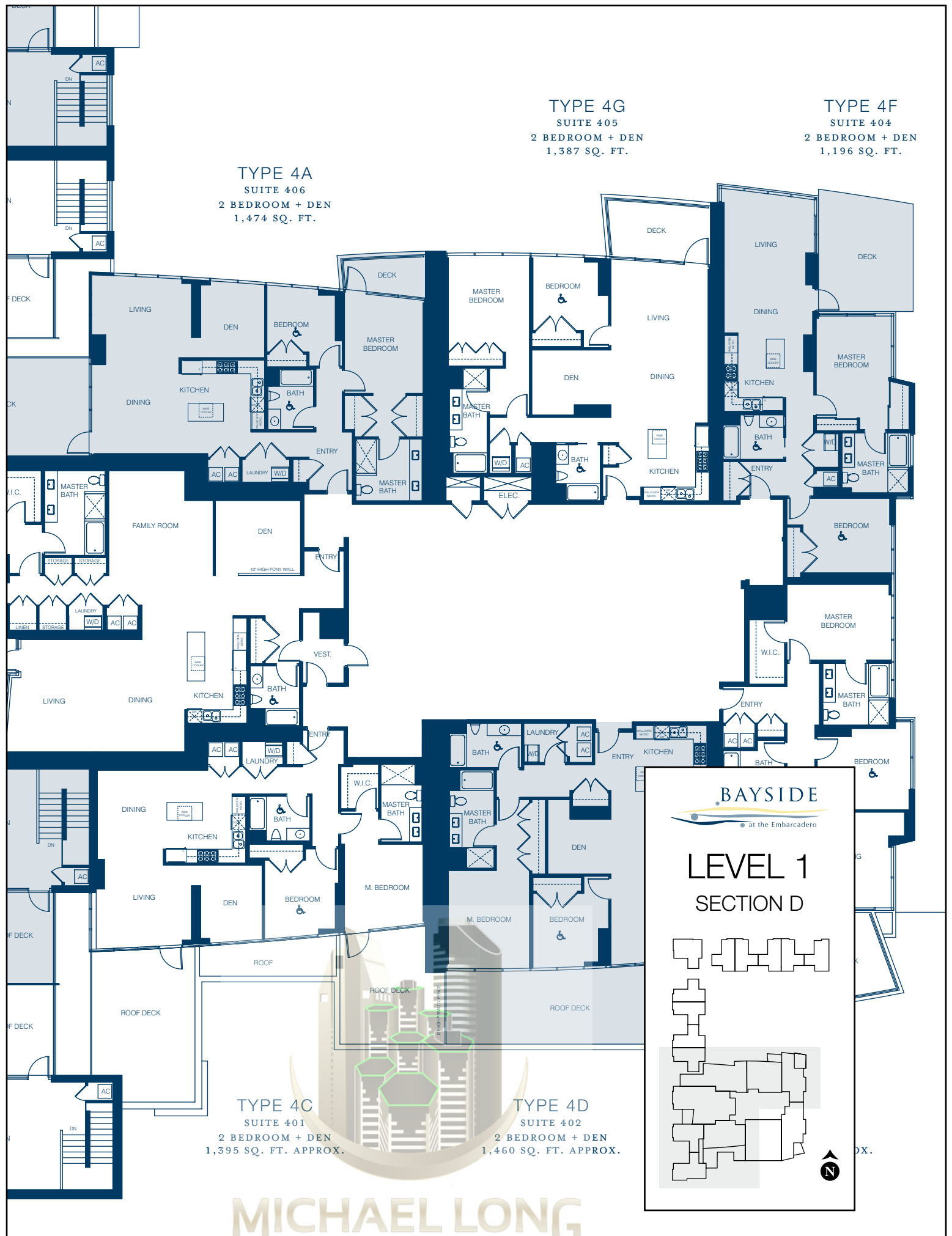
TYPE 4C  
SUITE 401  
2 BEDROOM + DEN  
1,395 SQ. FT. APPROX.

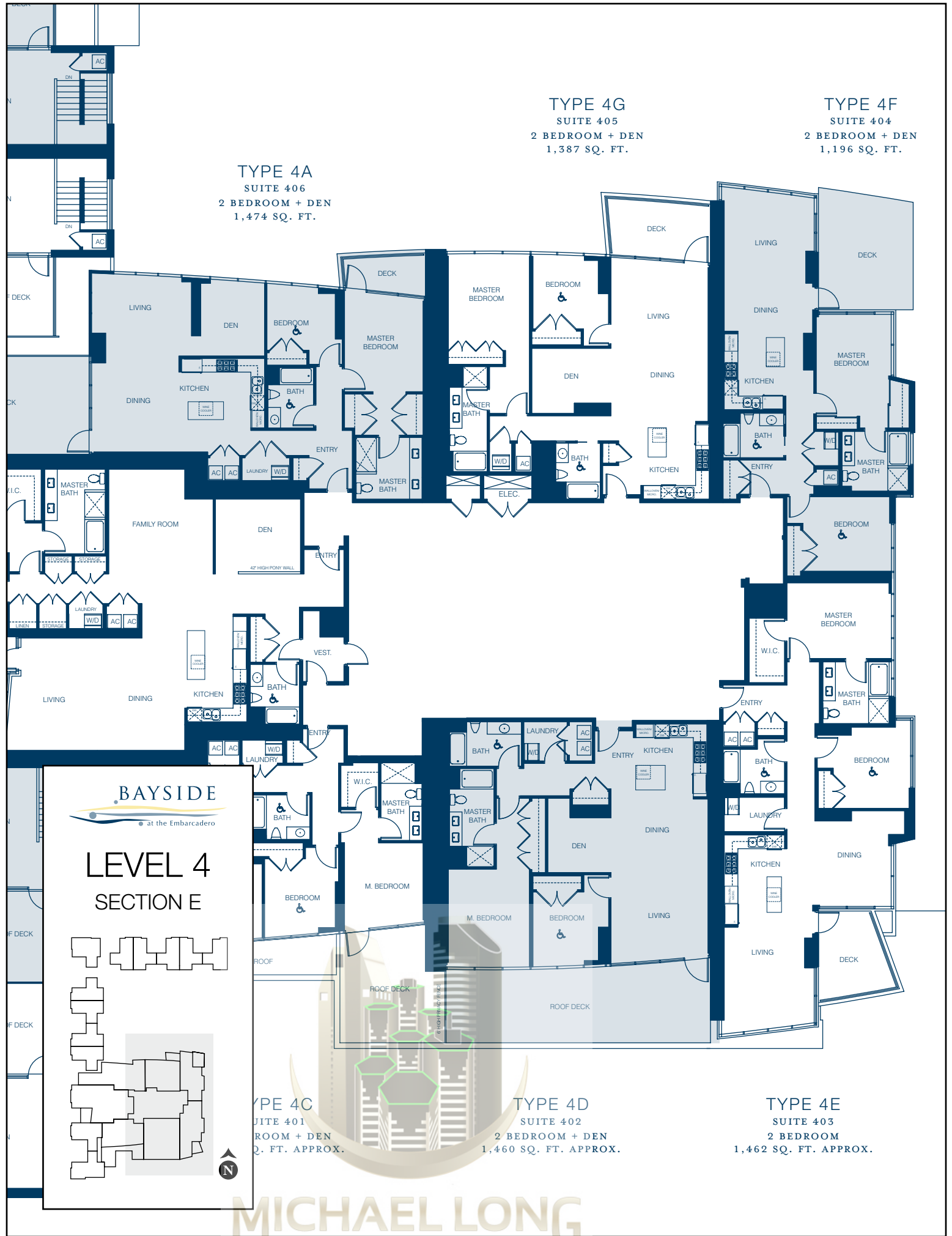


BAYSIDE  
at the Embarcadero

# LEVEL 4 SECTION C



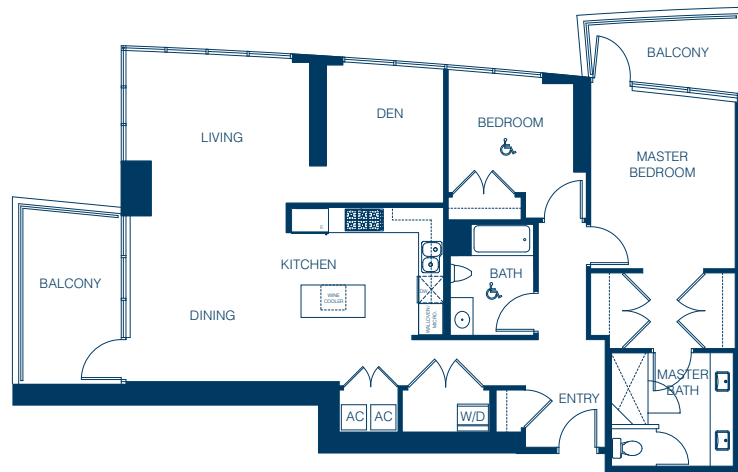




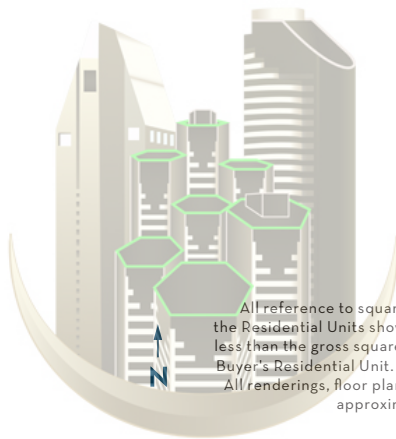
# BAYSIDE

at the Embarcadero

TYPE A  
Suites 406, 507-2807  
2 BR + DEN  
1,474 sq. ft. approx.  
Level 4 - 28



406, 507-2807  
(406 has larger roof deck)



All reference to square footage or floor area are approximate and are based upon the gross square footage of the Residential Units shown on the architectural plans. The actual square footage of the Residential Units will be less than the gross square footage. Buyer should not rely upon any advertising materials to determine the size of Buyer's Residential Unit. Only the as-built condition will determine the square footage of Buyer's Condominium. All renderings, floor plans and site plans shown in the sales office, brochures and other advertising materials are approximate illustrations only and are subject to change. Ask a Bayside sales person for details.

**MICHAEL LONG**  
DOWNTOWN SAN DIEGO REAL ESTATE

# BAYSIDE

at the Embarcadero

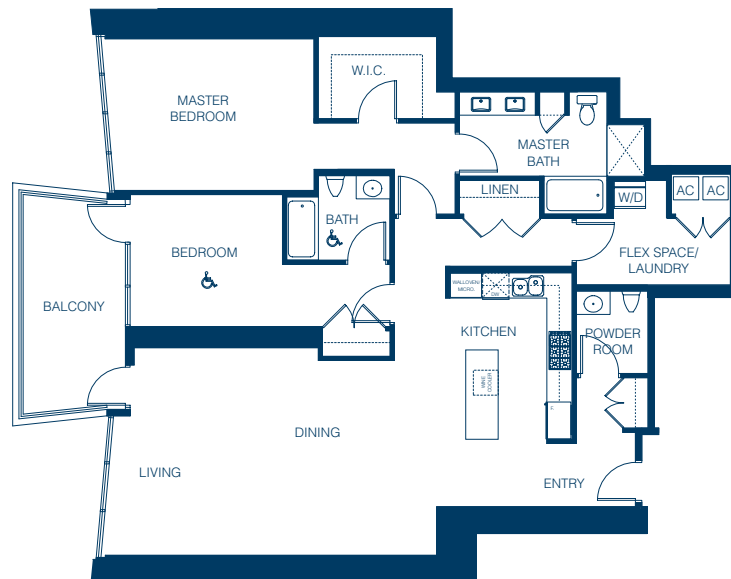
TYPE B

Suites 501-2801

2 BR

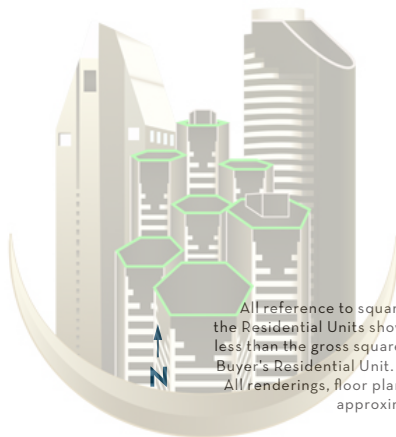
1,811 sq. ft. approx.

Level 5 - 28



Note: 501 will have a different kitchen layout. Only has 4 burners at cooktop.

501-2801



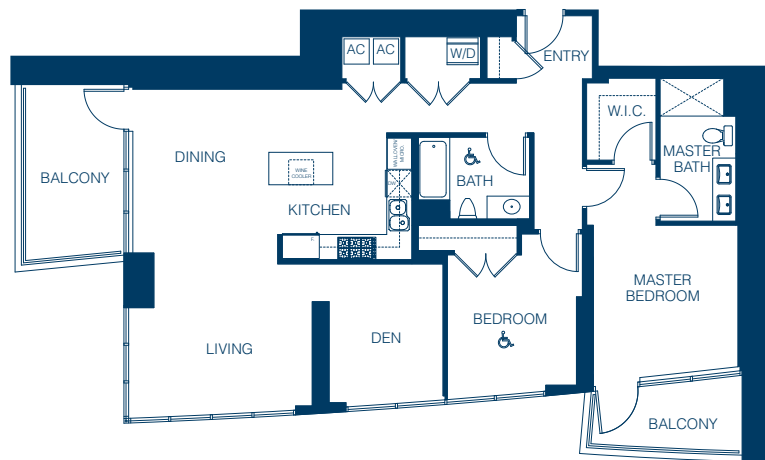
All reference to square footage or floor area are approximate and are based upon the gross square footage of the Residential Units shown on the architectural plans. The actual square footage of the Residential Units will be less than the gross square footage. Buyer should not rely upon any advertising materials to determine the size of Buyer's Residential Unit. Only the as-built condition will determine the square footage of Buyer's Condominium. All renderings, floor plans and site plans shown in the sales office, brochures and other advertising materials are approximate illustrations only and are subject to change. Ask a Bayside sales person for details.

**MICHAEL LONG**  
DOWNTOWN SAN DIEGO REAL ESTATE

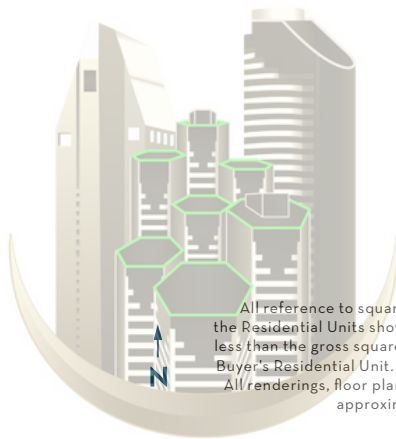
# BAYSIDE

at the Embarcadero

TYPE C  
Suites 401, 502-2802  
2 BR + DEN  
1,395 - 1,404 sq. ft. approx.  
Level 4 - 28



401, 502-2802  
(401 and 502 have larger roof decks)



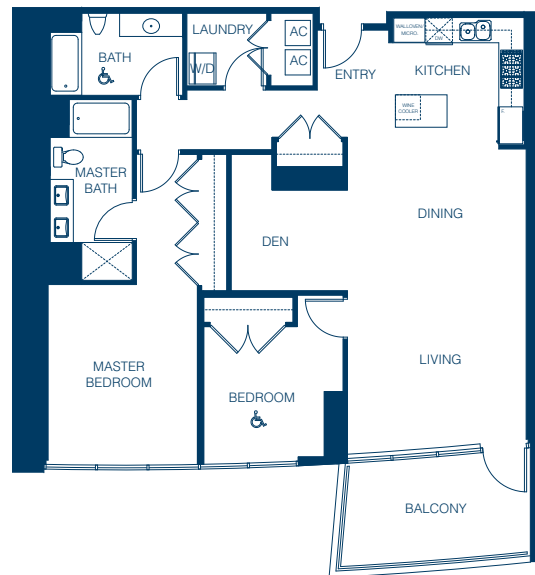
All reference to square footage or floor area are approximate and are based upon the gross square footage of the Residential Units shown on the architectural plans. The actual square footage of the Residential Units will be less than the gross square footage. Buyer should not rely upon any advertising materials to determine the size of Buyer's Residential Unit. Only the as-built condition will determine the square footage of Buyer's Condominium. All renderings, floor plans and site plans shown in the sales office, brochures and other advertising materials are approximate illustrations only and are subject to change. Ask a Bayside sales person for details.

**MICHAEL LONG**  
DOWNTOWN SAN DIEGO REAL ESTATE

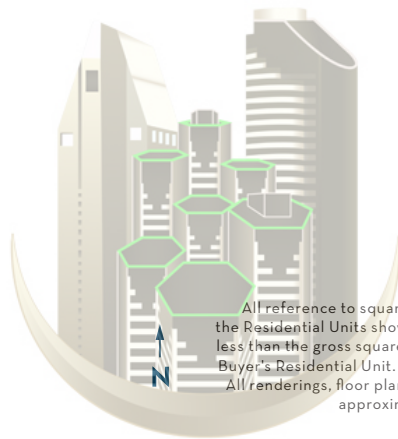
# BAYSIDE

at the Embarcadero

TYPE D  
Suites 402, 503-2803  
2 BR + DEN  
1,460 sq. ft. approx.  
Level 4 - 28



402, 503-2803  
(402 has larger roof deck)



All reference to square footage or floor area are approximate and are based upon the gross square footage of the Residential Units shown on the architectural plans. The actual square footage of the Residential Units will be less than the gross square footage. Buyer should not rely upon any advertising materials to determine the size of Buyer's Residential Unit. Only the as-built condition will determine the square footage of Buyer's Condominium. All renderings, floor plans and site plans shown in the sales office, brochures and other advertising materials are approximate illustrations only and are subject to change. Ask a Bayside sales person for details.

**MICHAEL LONG**  
DOWNTOWN SAN DIEGO REAL ESTATE

# BAYSIDE



at the Embarcadero

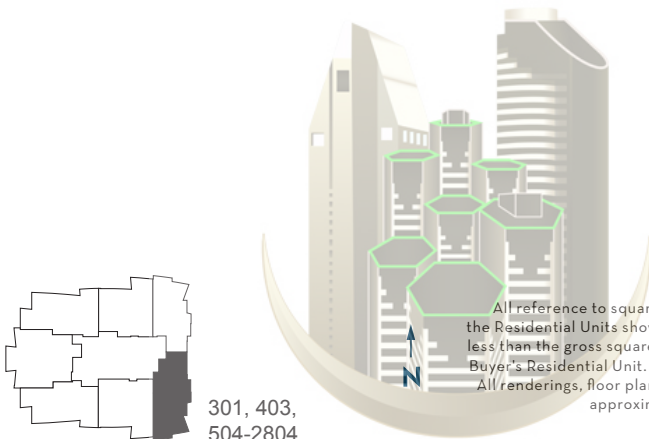
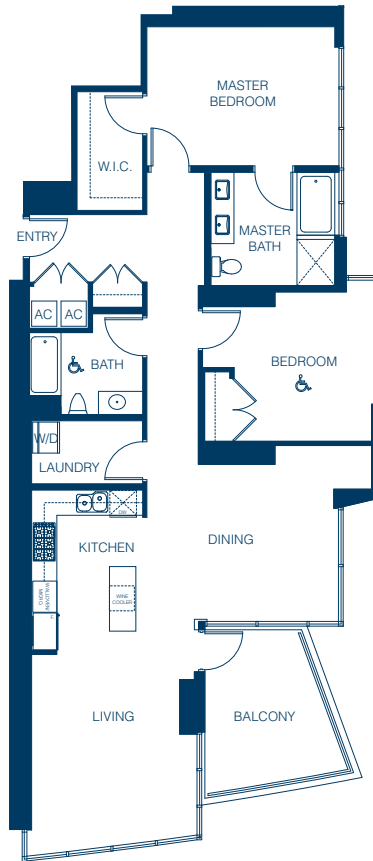
TYPE E

Suites 301, 403, 504-2804

2 BR

1,462 - 1,494 sq. ft. approx.

Level 3 - 28



301, 403,  
504-2804  
(301 has larger roof deck)

All reference to square footage or floor area are approximate and are based upon the gross square footage of the Residential Units shown on the architectural plans. The actual square footage of the Residential Units will be less than the gross square footage. Buyer should not rely upon any advertising materials to determine the size of Buyer's Residential Unit. Only the as-built condition will determine the square footage of Buyer's Condominium. All renderings, floor plans and site plans shown in the sales office, brochures and other advertising materials are approximate illustrations only and are subject to change. Ask a Bayside sales person for details.

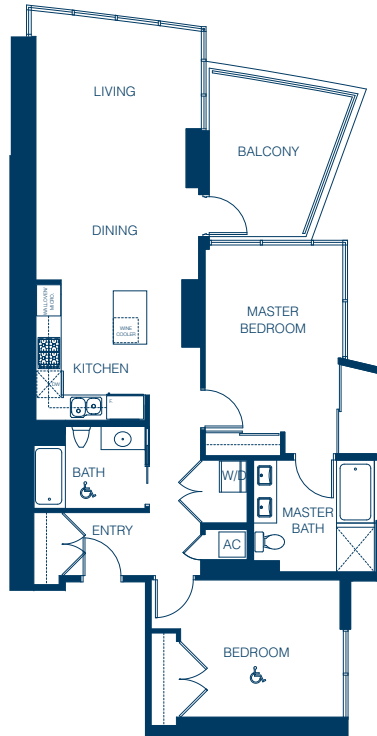
**MICHAEL LONG**  
DOWNTOWN SAN DIEGO REAL ESTATE



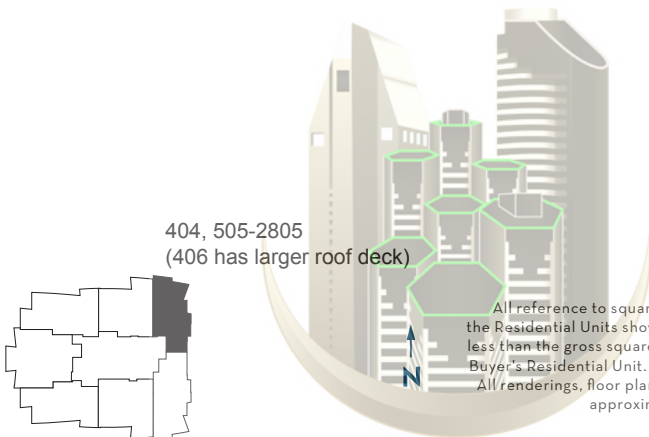
# BAYSIDE

at the Embarcadero

TYPE F  
Suites 404, 505-2805  
2 BR  
1,196 sq. ft. approx.  
Level 4 - 28



404, 505-2805  
(406 has larger roof deck)



All reference to square footage or floor area are approximate and are based upon the gross square footage of the Residential Units shown on the architectural plans. The actual square footage of the Residential Units will be less than the gross square footage. Buyer should not rely upon any advertising materials to determine the size of Buyer's Residential Unit. Only the as-built condition will determine the square footage of Buyer's Condominium. All renderings, floor plans and site plans shown in the sales office, brochures and other advertising materials are approximate illustrations only and are subject to change. Ask a Bayside sales person for details.

**MICHAEL LONG**  
DOWNTOWN SAN DIEGO REAL ESTATE

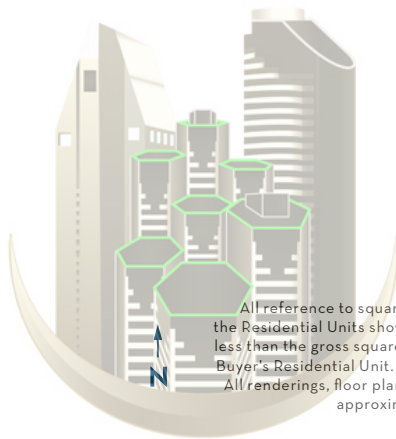
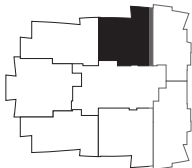
# BAYSIDE

at the Embarcadero

TYPE G  
Suites 405, 506-2806  
2 BR + DEN  
1,387 sq. ft. approx.  
Level 4 - 28



405, 506-2806



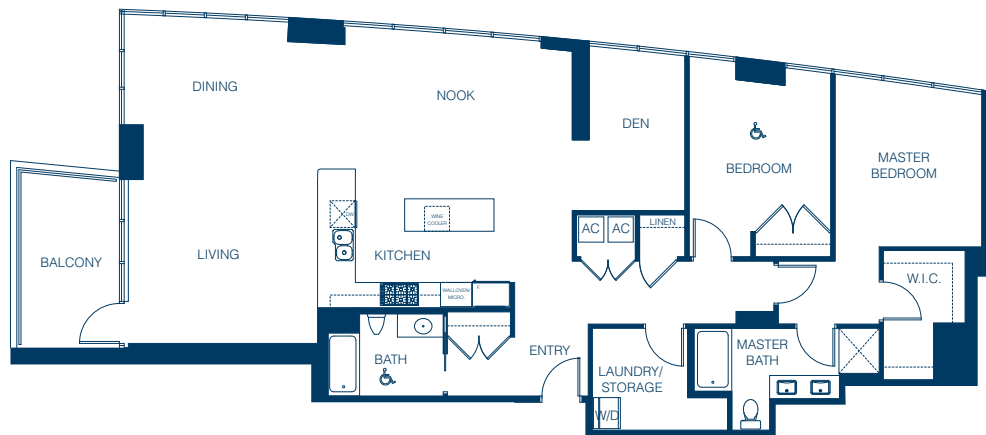
All reference to square footage or floor area are approximate and are based upon the gross square footage of the Residential Units shown on the architectural plans. The actual square footage of the Residential Units will be less than the gross square footage. Buyer should not rely upon any advertising materials to determine the size of Buyer's Residential Unit. Only the as-built condition will determine the square footage of Buyer's Condominium. All renderings, floor plans and site plans shown in the sales office, brochures and other advertising materials are approximate illustrations only and are subject to change. Ask a Bayside sales person for details.

**MICHAEL LONG**  
DOWNTOWN SAN DIEGO REAL ESTATE

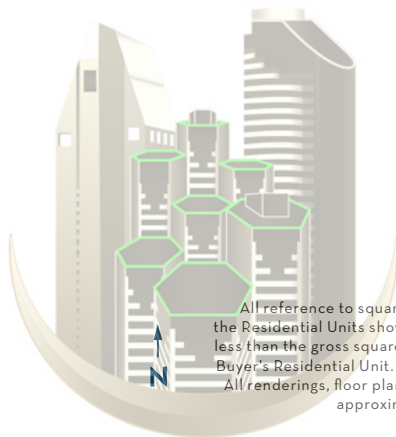
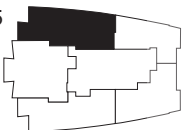
# BAYSIDE

at the Embarcadero

TYPE H  
Suites 2905, 3005  
2 BR + DEN  
1,886 sq. ft. approx.  
Level 29 - 30



2905, 3005



All reference to square footage or floor area are approximate and are based upon the gross square footage of the Residential Units shown on the architectural plans. The actual square footage of the Residential Units will be less than the gross square footage. Buyer should not rely upon any advertising materials to determine the size of Buyer's Residential Unit. Only the as-built condition will determine the square footage of Buyer's Condominium. All renderings, floor plans and site plans shown in the sales office, brochures and other advertising materials are approximate illustrations only and are subject to change. Ask a Bayside sales person for details.

**MICHAEL LONG**  
DOWNTOWN SAN DIEGO REAL ESTATE

# BAYSIDE

at the Embarcadero

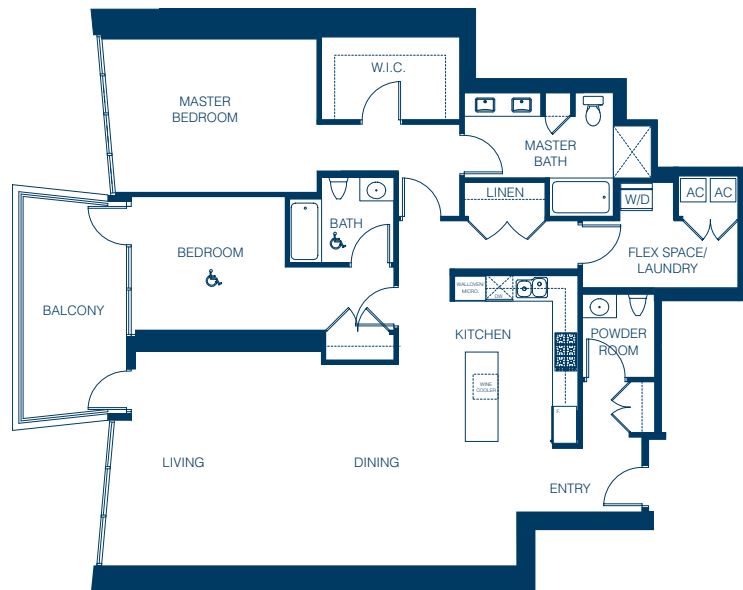
TYPE J

Suites 2901, 3601

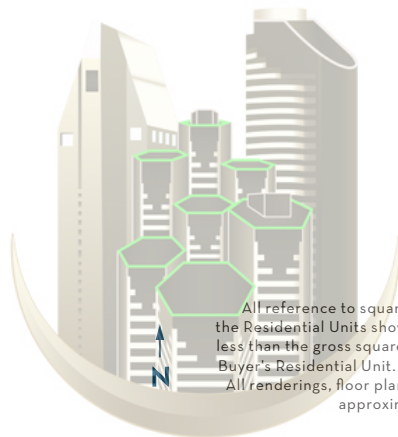
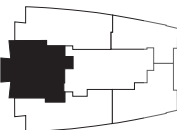
2 BR

1,860 sq. ft. approx.

Level 29 - 36



2901-3601



All reference to square footage or floor area are approximate and are based upon the gross square footage of the Residential Units shown on the architectural plans. The actual square footage of the Residential Units will be less than the gross square footage. Buyer should not rely upon any advertising materials to determine the size of Buyer's Residential Unit. Only the as-built condition will determine the square footage of Buyer's Condominium. All renderings, floor plans and site plans shown in the sales office, brochures and other advertising materials are approximate illustrations only and are subject to change. Ask a Bayside sales person for details.

**MICHAEL LONG**  
DOWNTOWN SAN DIEGO REAL ESTATE

# BAYSIDE

at the Embarcadero

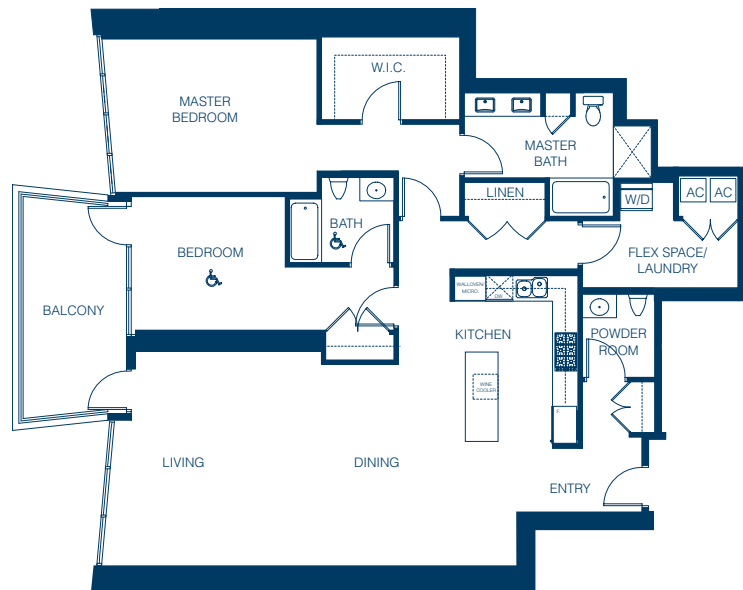
TYPE J

Suites 2901, 3601

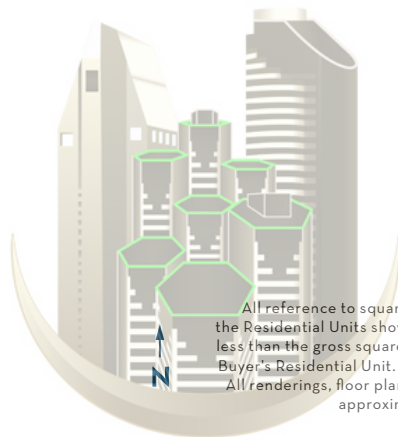
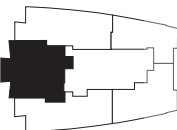
2 BR

1,860 sq. ft. approx.

Level 29 - 36



2901-3601



All reference to square footage or floor area are approximate and are based upon the gross square footage of the Residential Units shown on the architectural plans. The actual square footage of the Residential Units will be less than the gross square footage. Buyer should not rely upon any advertising materials to determine the size of Buyer's Residential Unit. Only the as-built condition will determine the square footage of Buyer's Condominium. All renderings, floor plans and site plans shown in the sales office, brochures and other advertising materials are approximate illustrations only and are subject to change. Ask a Bayside sales person for details.

**MICHAEL LONG**  
DOWNTOWN SAN DIEGO REAL ESTATE

# BAYSIDE

at the Embarcadero

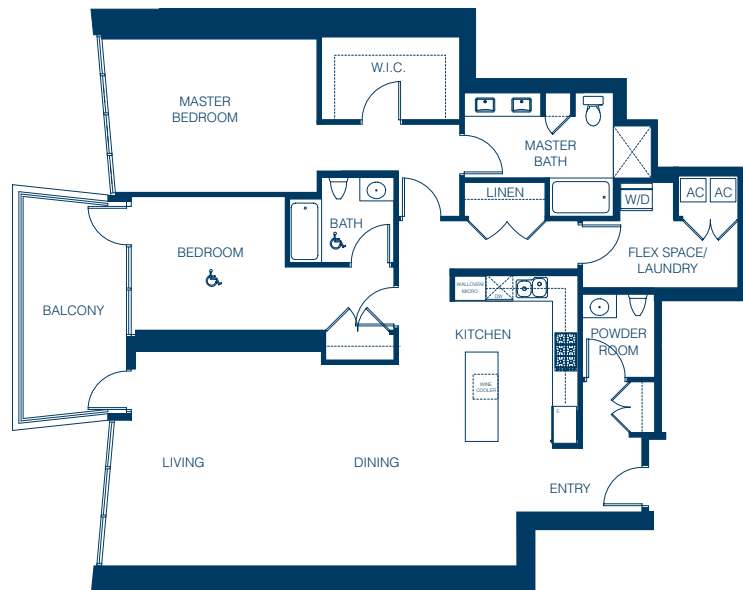
TYPE J

Suites 2901, 3601

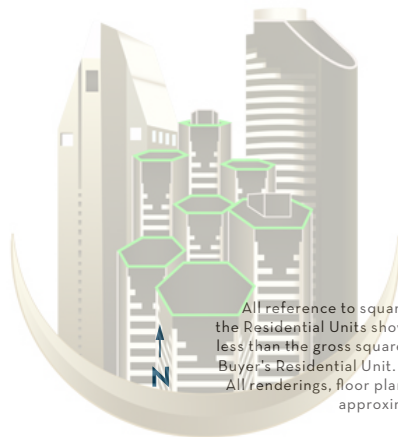
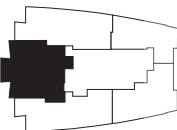
2 BR

1,860 sq. ft. approx.

Level 29 - 36



2901-3601



All reference to square footage or floor area are approximate and are based upon the gross square footage of the Residential Units shown on the architectural plans. The actual square footage of the Residential Units will be less than the gross square footage. Buyer should not rely upon any advertising materials to determine the size of Buyer's Residential Unit. Only the as-built condition will determine the square footage of Buyer's Condominium. All renderings, floor plans and site plans shown in the sales office, brochures and other advertising materials are approximate illustrations only and are subject to change. Ask a Bayside sales person for details.

**MICHAEL LONG**  
DOWNTOWN SAN DIEGO REAL ESTATE

# BAYSIDE

at the Embarcadero

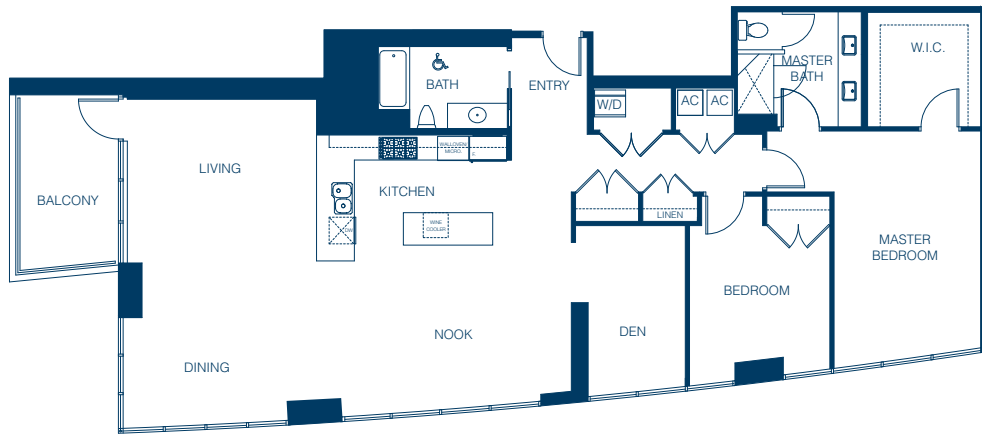
TYPE K

Suites 2902, 3002

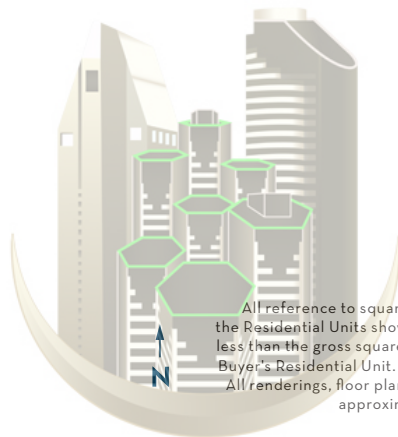
2 BR + DEN + NOOK

1,894 sq. ft. approx.

Level 29 - 30



2902, 3002



All reference to square footage or floor area are approximate and are based upon the gross square footage of the Residential Units shown on the architectural plans. The actual square footage of the Residential Units will be less than the gross square footage. Buyer should not rely upon any advertising materials to determine the size of Buyer's Residential Unit. Only the as-built condition will determine the square footage of Buyer's Condominium. All renderings, floor plans and site plans shown in the sales office, brochures and other advertising materials are approximate illustrations only and are subject to change. Ask a Bayside sales person for details.

**MICHAEL LONG**  
DOWNTOWN SAN DIEGO REAL ESTATE

# BAYSIDE



at the Embarcadero

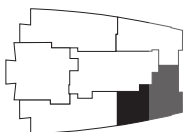
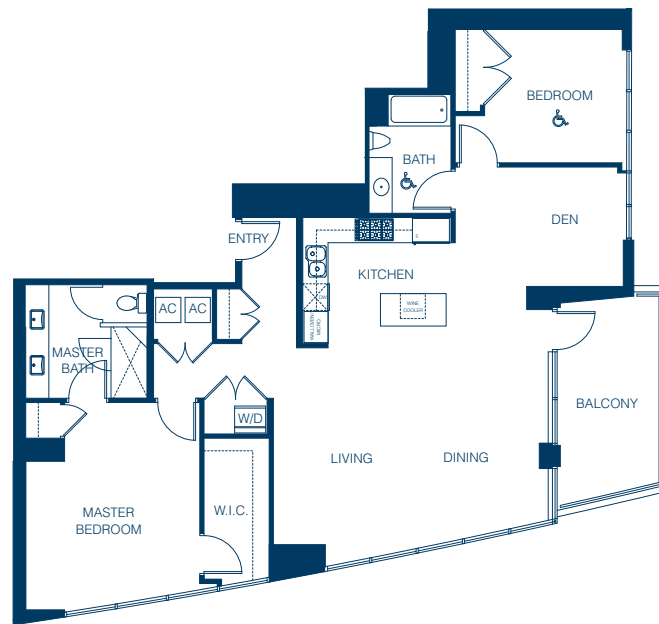
TYPE L

Suites 2903, 3003

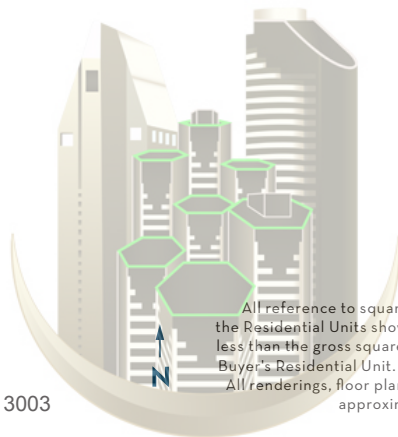
2 BR + DEN

1,458 sq. ft. approx.

Level 29 - 30



2903, 3003



All reference to square footage or floor area are approximate and are based upon the gross square footage of the Residential Units shown on the architectural plans. The actual square footage of the Residential Units will be less than the gross square footage. Buyer should not rely upon any advertising materials to determine the size of Buyer's Residential Unit. Only the as-built condition will determine the square footage of Buyer's Condominium. All renderings, floor plans and site plans shown in the sales office, brochures and other advertising materials are approximate illustrations only and are subject to change. Ask a Bayside sales person for details.

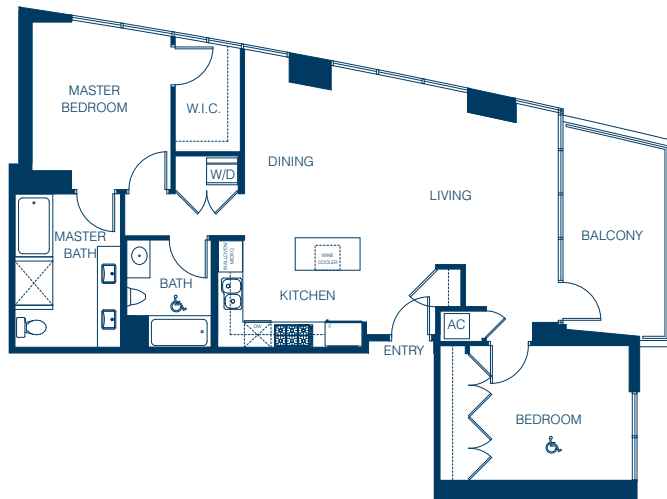
**MICHAEL LONG**  
DOWNTOWN SAN DIEGO REAL ESTATE



# BAYSIDE

at the Embarcadero

TYPE M  
Suites 2904, 3004  
2 BR  
1,183 sq. ft. approx.  
Level 29 - 30



2904, 3004

All reference to square footage or floor area are approximate and are based upon the gross square footage of the Residential Units shown on the architectural plans. The actual square footage of the Residential Units will be less than the gross square footage. Buyer should not rely upon any advertising materials to determine the size of Buyer's Residential Unit. Only the as-built condition will determine the square footage of Buyer's Condominium. All renderings, floor plans and site plans shown in the sales office, brochures and other advertising materials are approximate illustrations only and are subject to change. Ask a Bayside sales person for details.

**MICHAEL LONG**  
DOWNTOWN SAN DIEGO REAL ESTATE

# BAYSIDE

at the Embarcadero

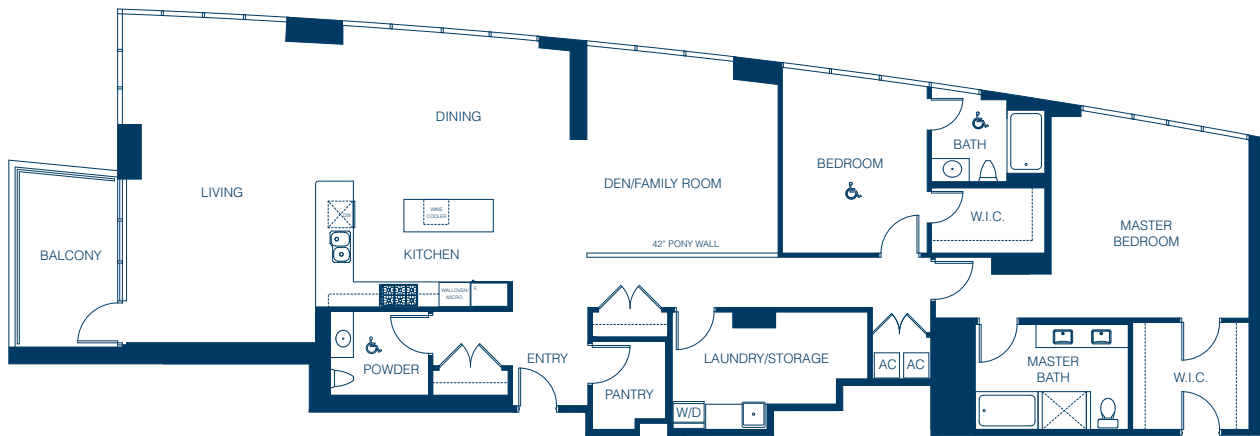
TYPE N

Suites 3104, 3204

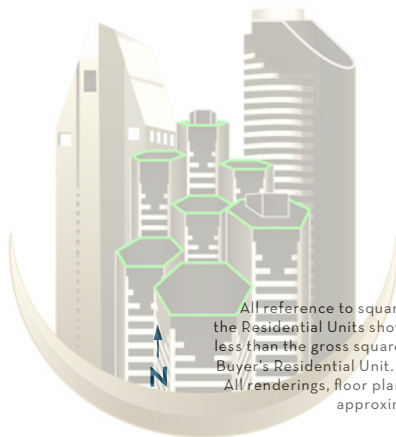
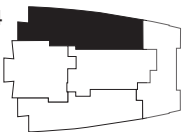
2 BR + DEN

2,448 sq. ft. approx.

Level 31 - 32



3104, 3204



All reference to square footage or floor area are approximate and are based upon the gross square footage of the Residential Units shown on the architectural plans. The actual square footage of the Residential Units will be less than the gross square footage. Buyer should not rely upon any advertising materials to determine the size of Buyer's Residential Unit. Only the as-built condition will determine the square footage of Buyer's Condominium. All renderings, floor plans and site plans shown in the sales office, brochures and other advertising materials are approximate illustrations only and are subject to change. Ask a Bayside sales person for details.

**MICHAEL LONG**  
DOWNTOWN SAN DIEGO REAL ESTATE

# BAYSIDE

at the Embarcadero

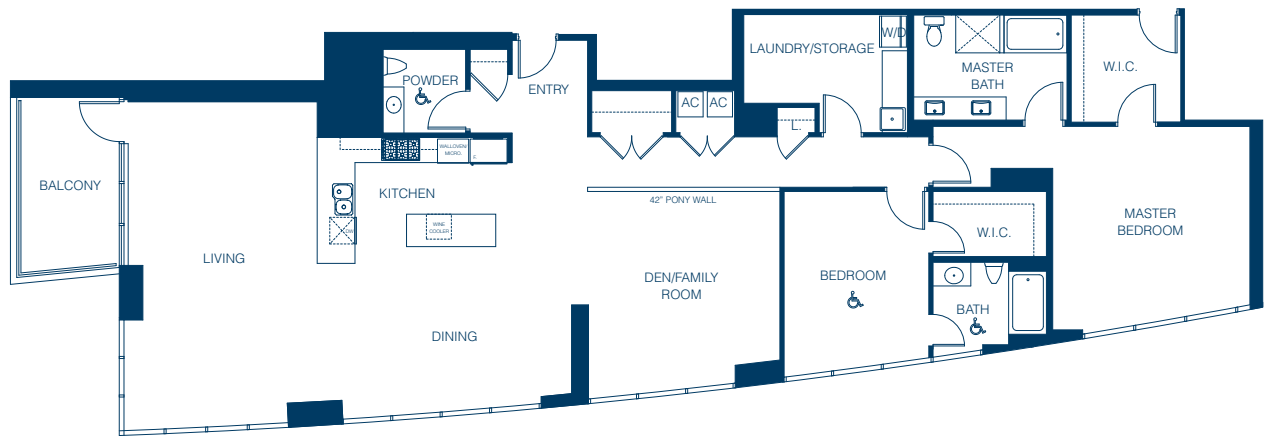
TYPE P

Suites 3102, 3202

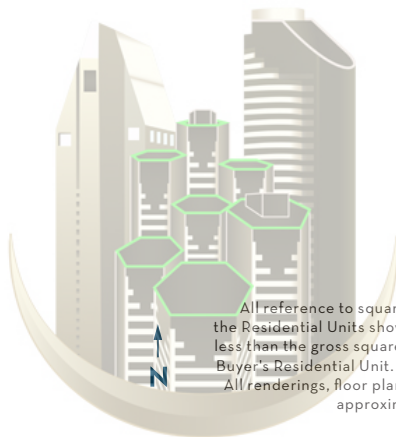
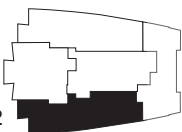
2 BR + DEN

2,384 sq. ft. approx.

Level 31 - 32



3102, 3202



All reference to square footage or floor area are approximate and are based upon the gross square footage of the Residential Units shown on the architectural plans. The actual square footage of the Residential Units will be less than the gross square footage. Buyer should not rely upon any advertising materials to determine the size of Buyer's Residential Unit. Only the as-built condition will determine the square footage of Buyer's Condominium. All renderings, floor plans and site plans shown in the sales office, brochures and other advertising materials are approximate illustrations only and are subject to change. Ask a Bayside sales person for details.

**MICHAEL LONG**  
DOWNTOWN SAN DIEGO REAL ESTATE

# BAYSIDE

at the Embarcadero

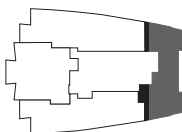
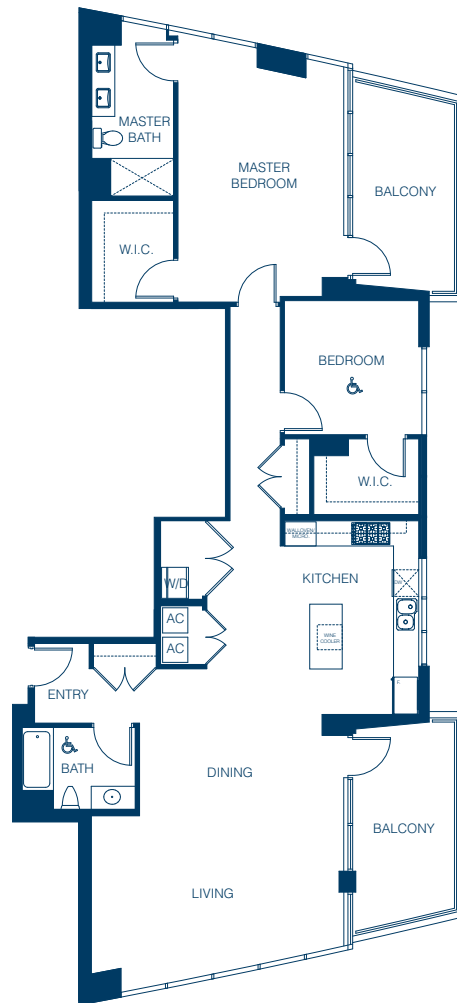
TYPE Q

Suites 3103, 3203

2 BR

1,606 sq. ft. approx.

Level 31 - 32



3103, 3203

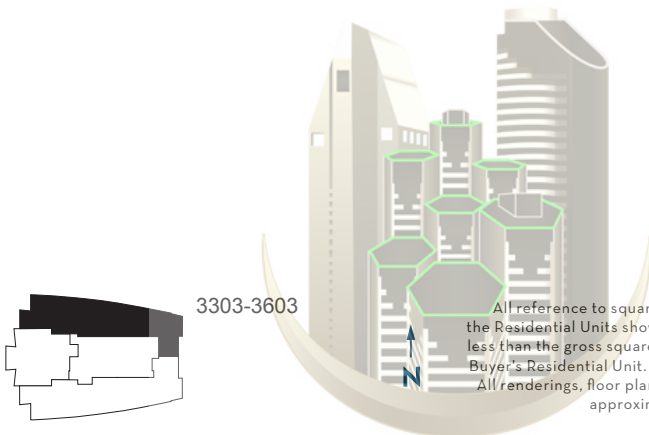
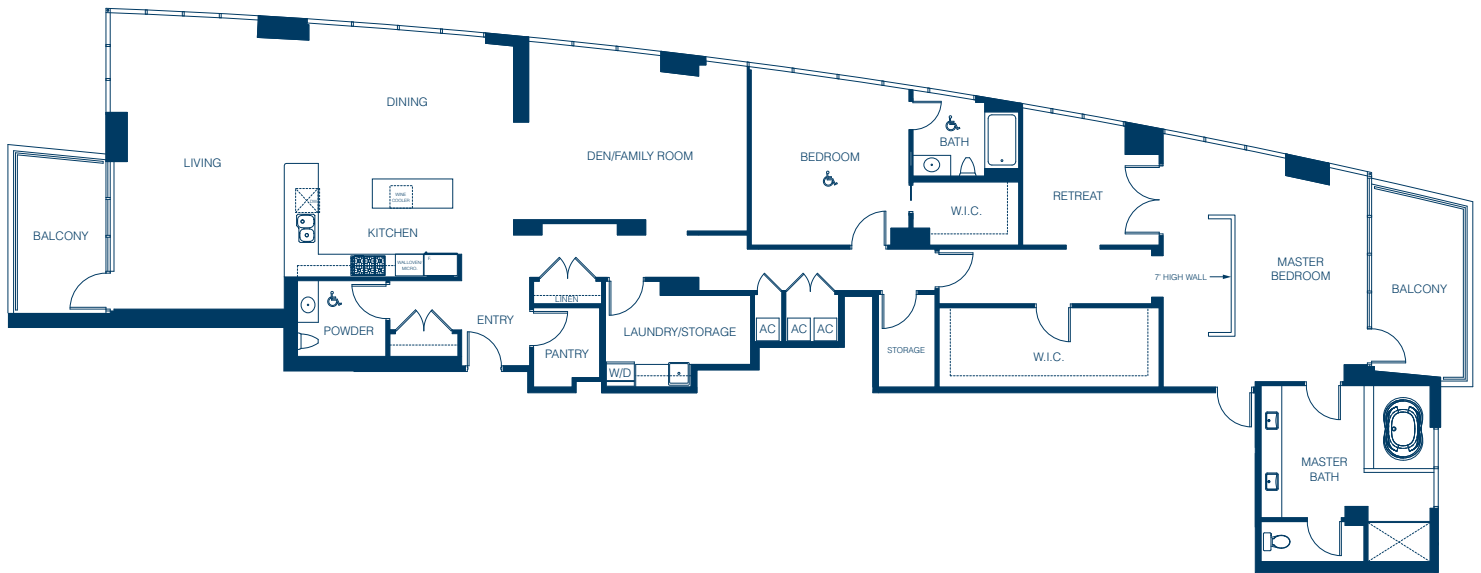
All reference to square footage or floor area are approximate and are based upon the gross square footage of the Residential Units shown on the architectural plans. The actual square footage of the Residential Units will be less than the gross square footage. Buyer should not rely upon any advertising materials to determine the size of Buyer's Residential Unit. Only the as-built condition will determine the square footage of Buyer's Condominium. All renderings, floor plans and site plans shown in the sales office, brochures and other advertising materials are approximate illustrations only and are subject to change. Ask a Bayside sales person for details.

**MICHAEL LONG**  
DOWNTOWN SAN DIEGO REAL ESTATE

# BAYSIDE

at the Embarcadero

TYPE R  
Suites 3303-3603  
2 BR + DEN  
3,151 sq. ft. approx.  
Level 33 - 36



3303-3603

All reference to square footage or floor area are approximate and are based upon the gross square footage of the Residential Units shown on the architectural plans. The actual square footage of the Residential Units will be less than the gross square footage. Buyer should not rely upon any advertising materials to determine the size of Buyer's Residential Unit. Only the as-built condition will determine the square footage of Buyer's Condominium. All renderings, floor plans and site plans shown in the sales office, brochures and other advertising materials are approximate illustrations only and are subject to change. Ask a Bayside sales person for details.

**MICHAEL LONG**  
DOWNTOWN SAN DIEGO REAL ESTATE

# BAYSIDE

at the Embarcadero

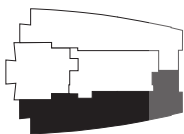
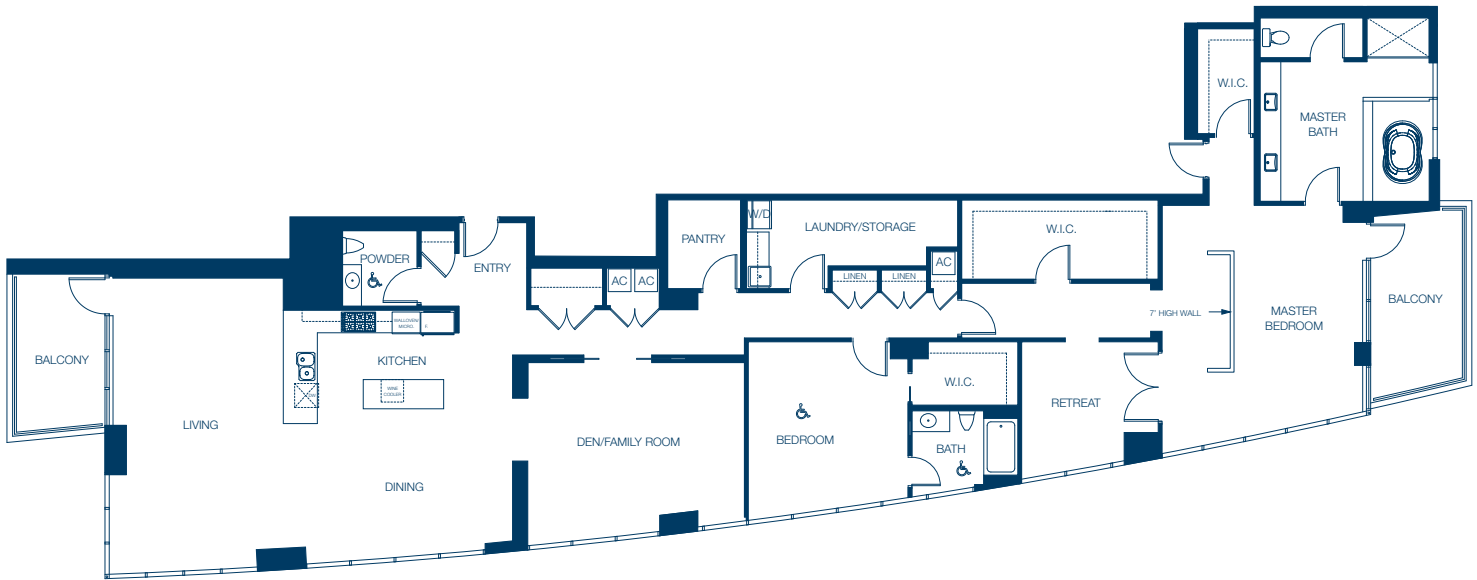
TYPE S

Suites 3302-3602

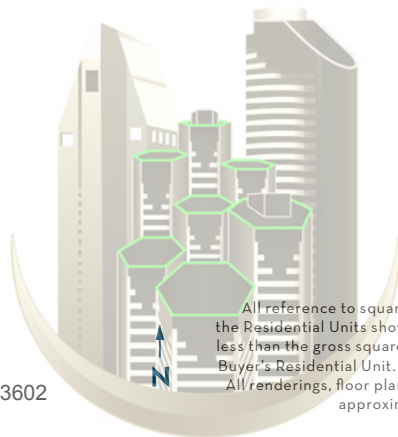
2 BR + DEN

3,226 sq. ft. approx.

Level 33 - 36



3302-3602



All reference to square footage or floor area are approximate and are based upon the gross square footage of the Residential Units shown on the architectural plans. The actual square footage of the Residential Units will be less than the gross square footage. Buyer should not rely upon any advertising materials to determine the size of Buyer's Residential Unit. Only the as-built condition will determine the square footage of Buyer's Condominium. All renderings, floor plans and site plans shown in the sales office, brochures and other advertising materials are approximate illustrations only and are subject to change. Ask a Bayside sales person for details.

**MICHAEL LONG**  
DOWNTOWN SAN DIEGO REAL ESTATE