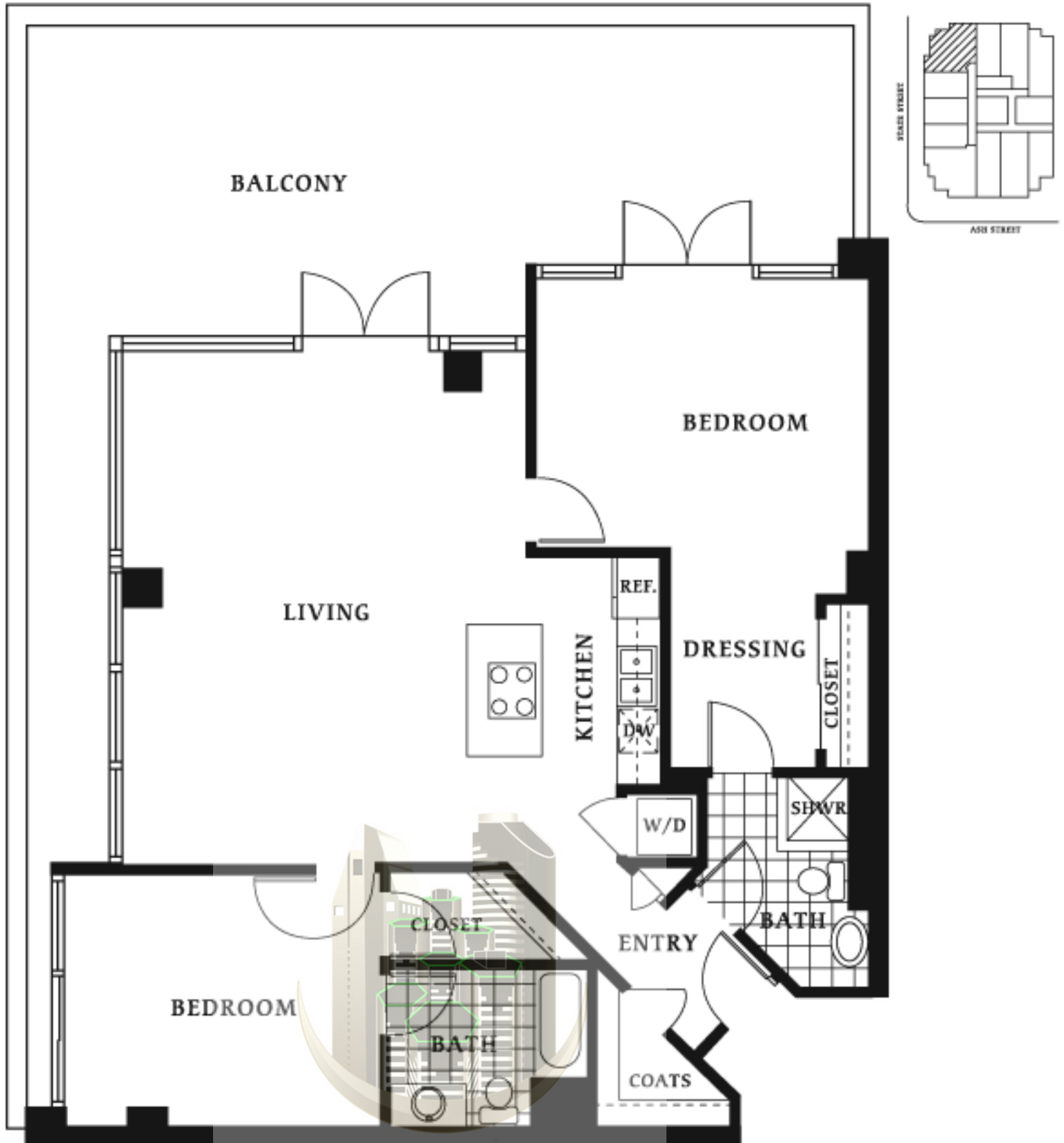


2 Bedroom / 2 Bath  
Approximately 1264 square feet

350 West Ash

URBAN HOMES



The developer reserves the right to make modifications and changes to floorplans, product design specifications and features should they be necessary. Prints, elevations, and square footages are approximate and subject to change without notice.

**MICHAEL LONG**  
DOWNTOWN SAN DIEGO REAL ESTATE

2 Bedroom / 2 Bath  
Approximately 1264 square feet

350 West Ash  
URBAN HOMES



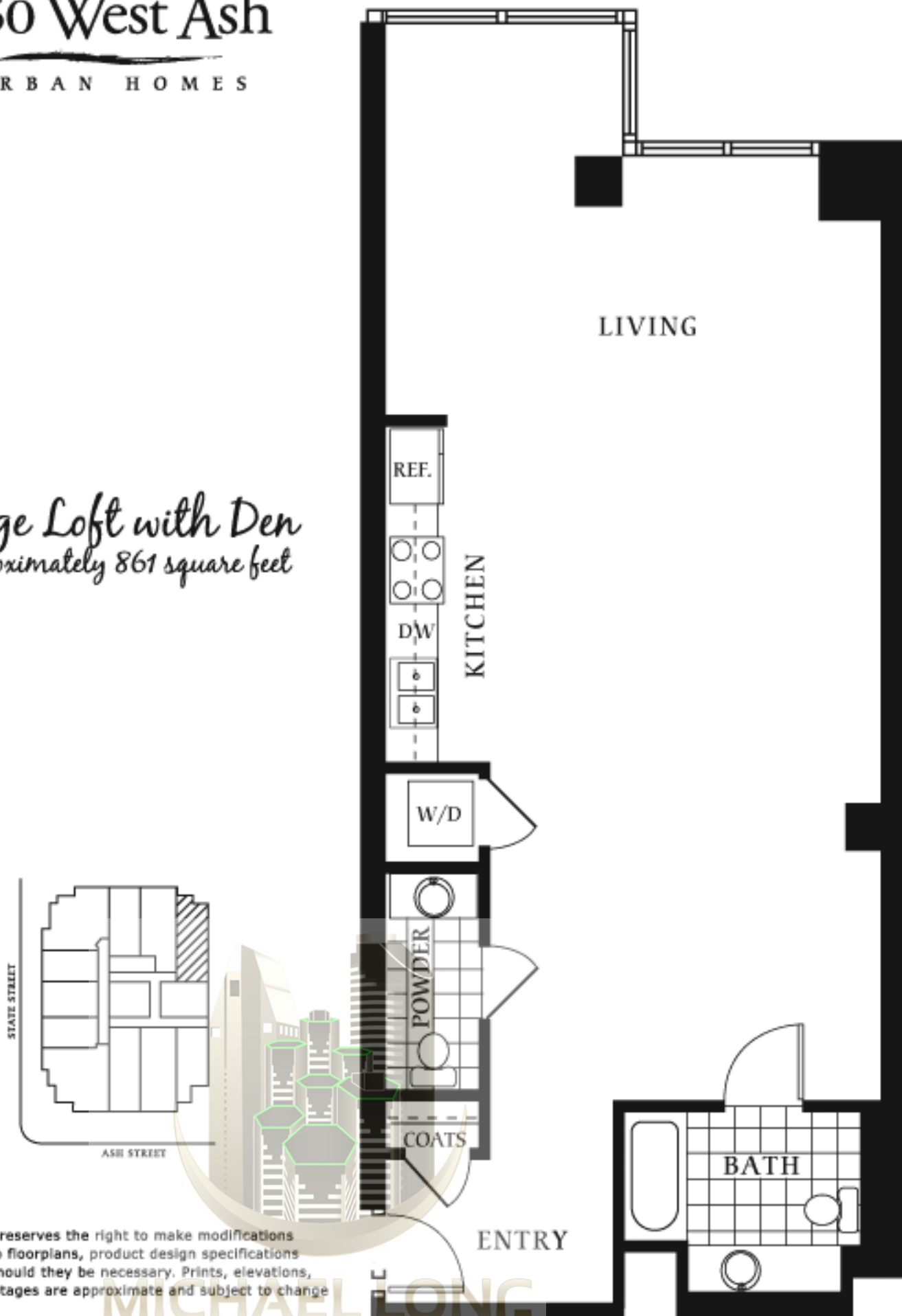
The developer reserves the right to make modifications and changes to foundations, product design specifications and materials. Prices, elevations, and square footages are approximate and subject to change without notice.

MIC  
DO

# 350 West Ash

URBAN HOMES

*Large Loft with Den*  
*Approximately 861 square feet*

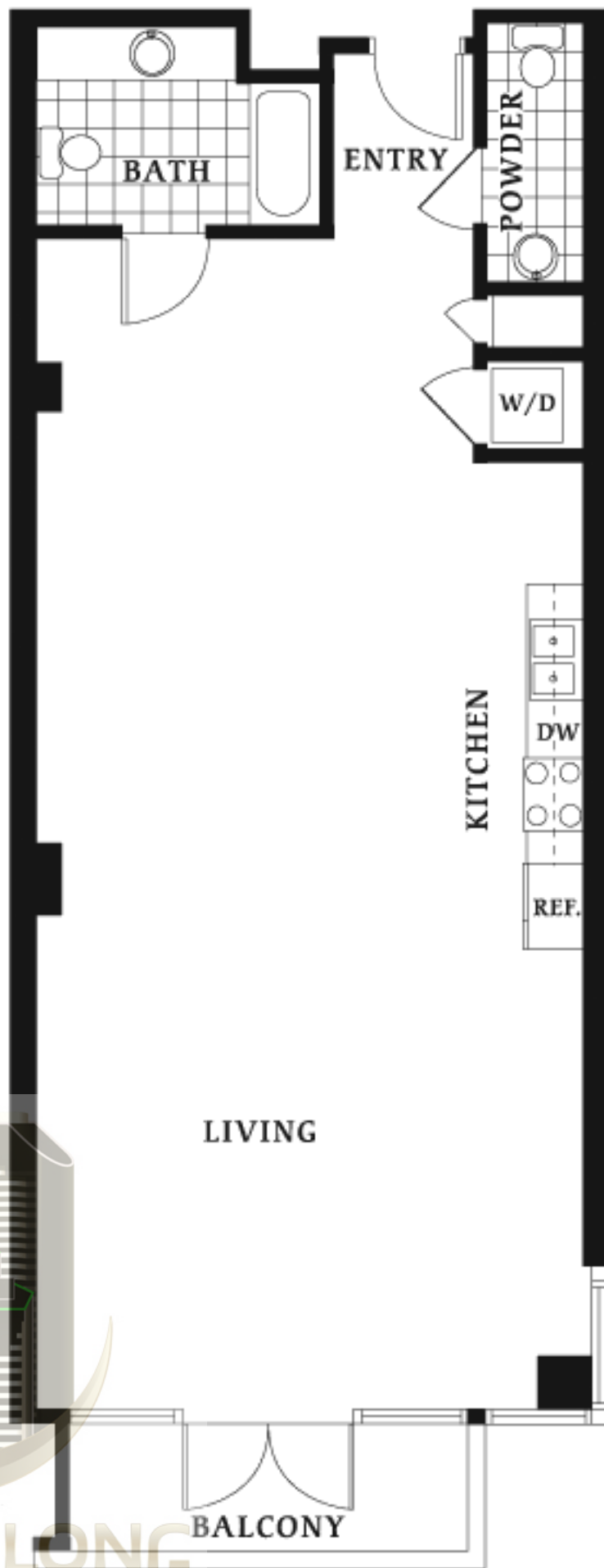
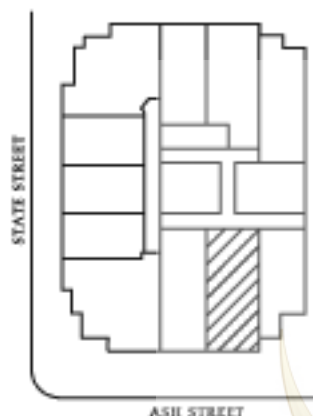


The developer reserves the right to make modifications and changes to floorplans, product design specifications and features should they be necessary. Prints, elevations, and square footages are approximate and subject to change without notice.

# 350 West Ash

URBAN HOMES

*Large Loft*  
*Approximately 920 square feet*

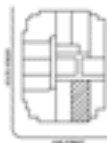


The developer reserves the right to make modifications and changes to floorplans, product design specifications and features should they be necessary. Prints, elevations, and square footages are approximate and subject to change without notice.

# 350 West Ash

URBAN HOMES

*Large Loft*  
Approximately 920 square feet



The developer reserves the right to make modifications and changes to floorplans, product design specifications and features should they be necessary. Walls, windows, and square footages are approximate and subject to change without notice.



MIC  
DO

# 350 West Ash

URBAN HOMES

*Large Loft with Den*  
*Approximately 800 square feet*



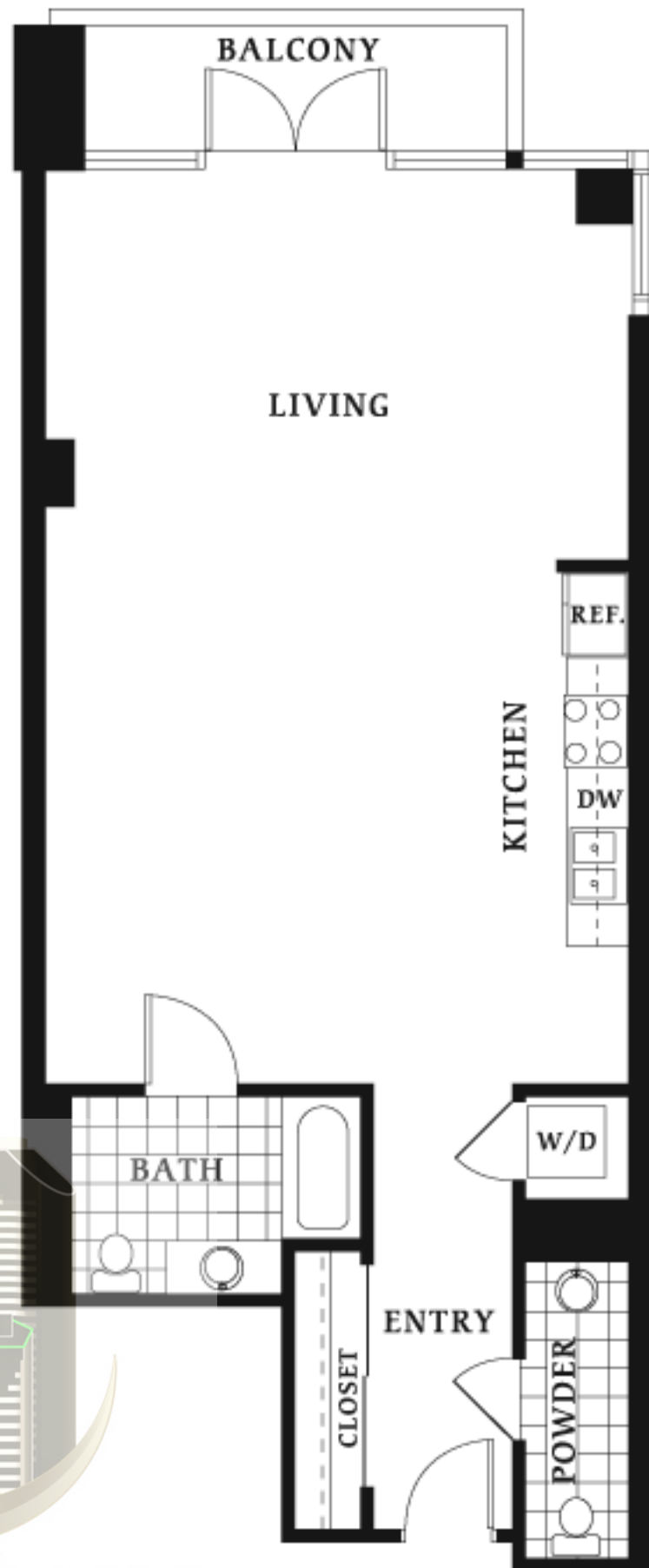
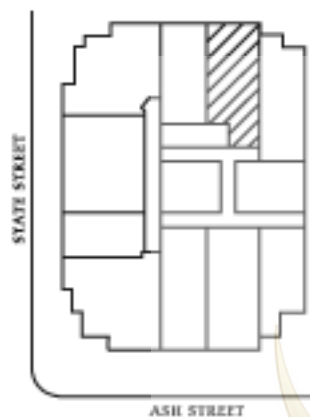
The developer reserves the right to make modifications and changes to floorplans, product design specifications, and features should they be necessary. Prices, elevations, and square footages are approximate and subject to change without notice.



# 350 West Ash

URBAN HOMES

*Loft*  
*Approximately 840 square feet*



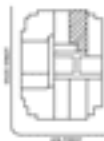
The developer reserves the right to make modifications and changes to floorplans, product design specifications and features should they be necessary. Prints, elevations, and square footages are approximate and subject to change without notice.

**MICHAEL LONG**  
DOWNTOWN SAN DIEGO REAL ESTATE

# 350 West Ash

URBAN HOMES

*Loft*  
Approximately 840 square feet



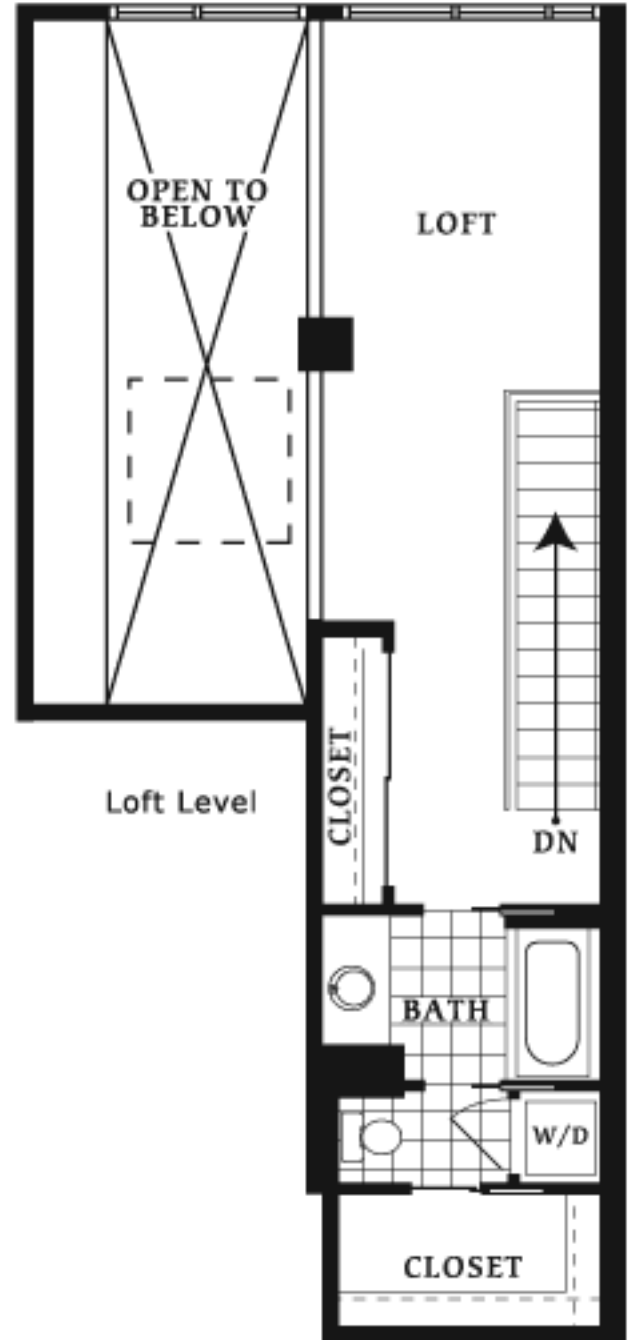
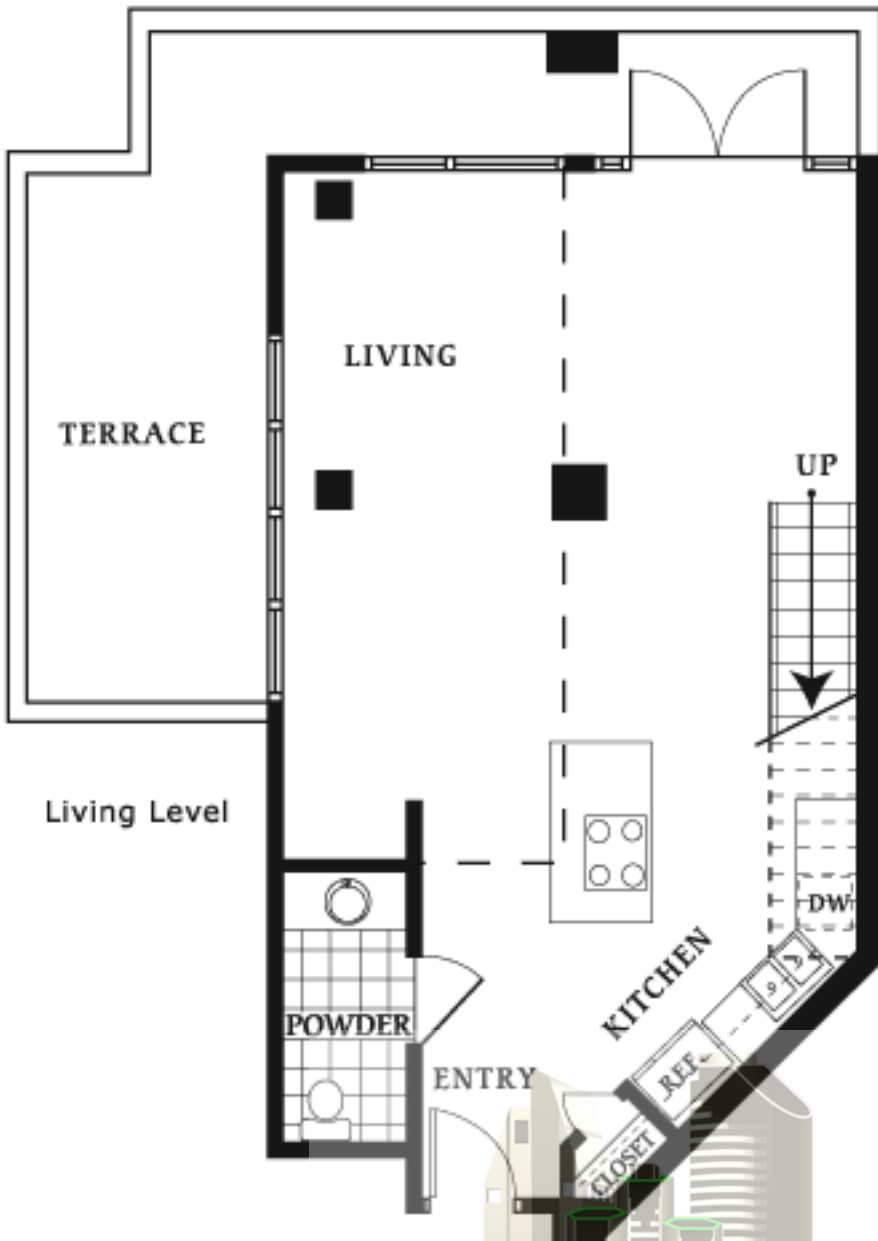
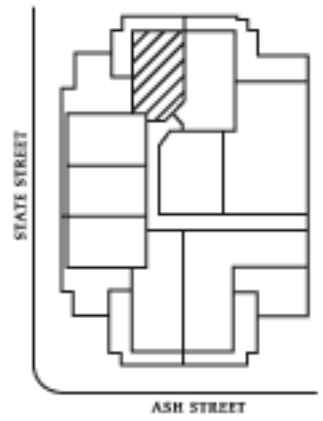
The developer reserves the right to make modifications and changes to floorplans, product design specifications, and features should they be necessary. Loads, elevations, and square footages are approximate and subject to change without notice.

MIC  
DO



# 350 West Ash

URBAN HOMES



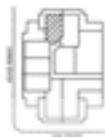
*Penthouse Loft*  
*Approximately 1097 square feet*

**MICHAEL LONG**  
DOWNTOWN SAN DIEGO REAL ESTATE

The developer reserves the right to make modifications and changes to floorplans, product design specifications and features should they be necessary. Prints, elevations, and square footages are approximate and subject to change without notice.

# 350 West Ash

URBAN HOMES



## Penthouse Loft

Approximately 1057 square feet

The developer reserves the right to make modifications and changes to finishes, product design specifications and features shown in these drawings. Prints, elevations, and square footages are approximate and subject to change without notice.

MIC  
DO