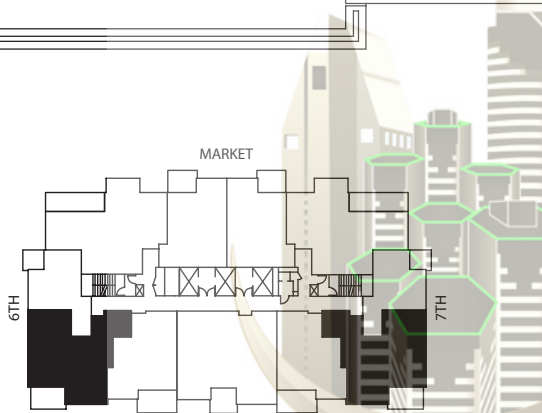




AL MARE REALTY



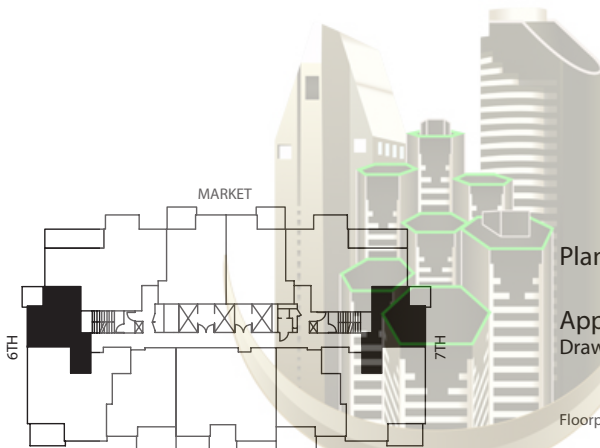
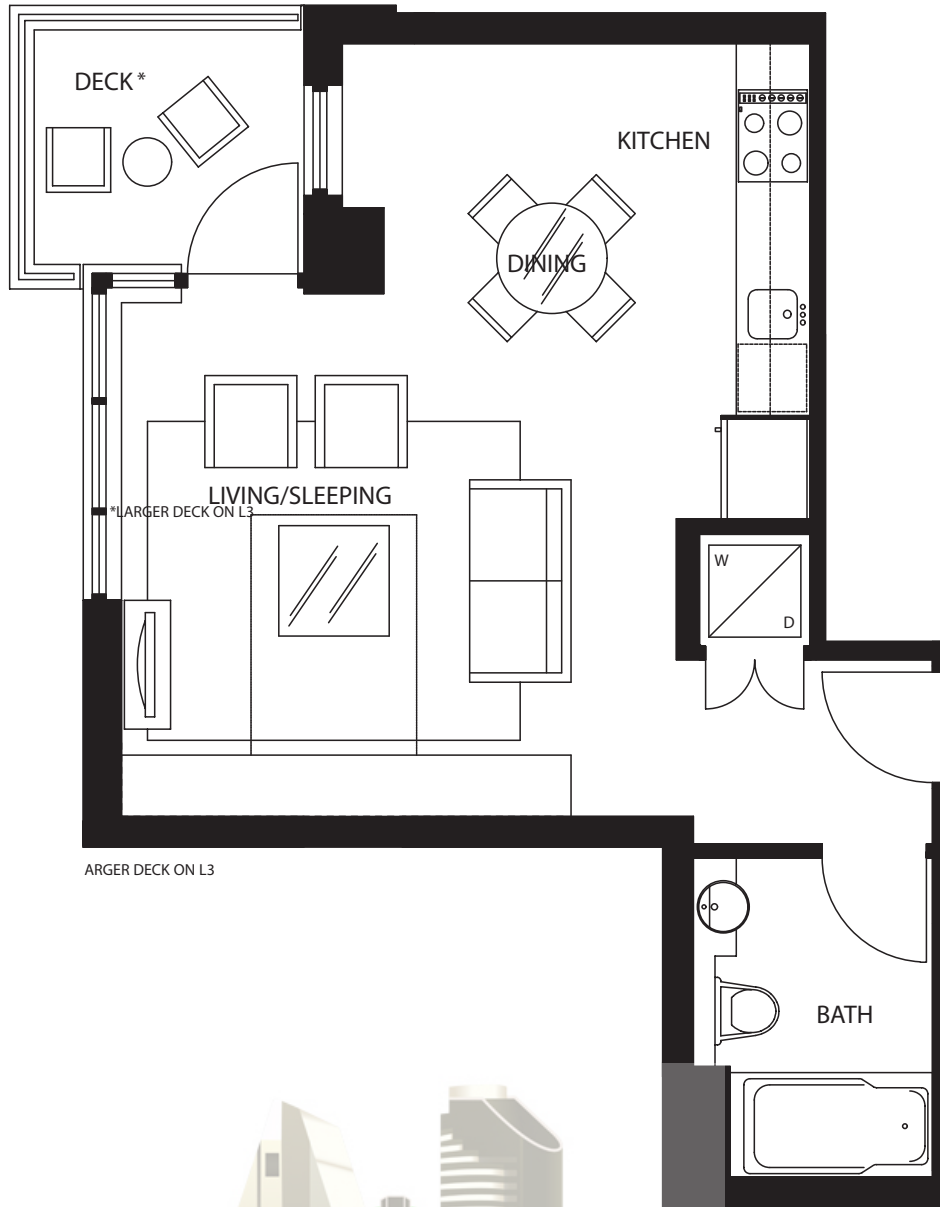
Plan A | Two bedroom one and a half bath

Approximately 960 sq.ft.  
Drawings not to scale

Floorplans may vary with unit location. Square footage is approximate.



AL MARE REALTY



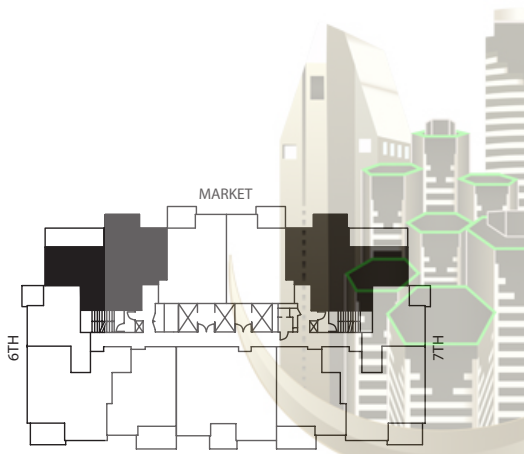
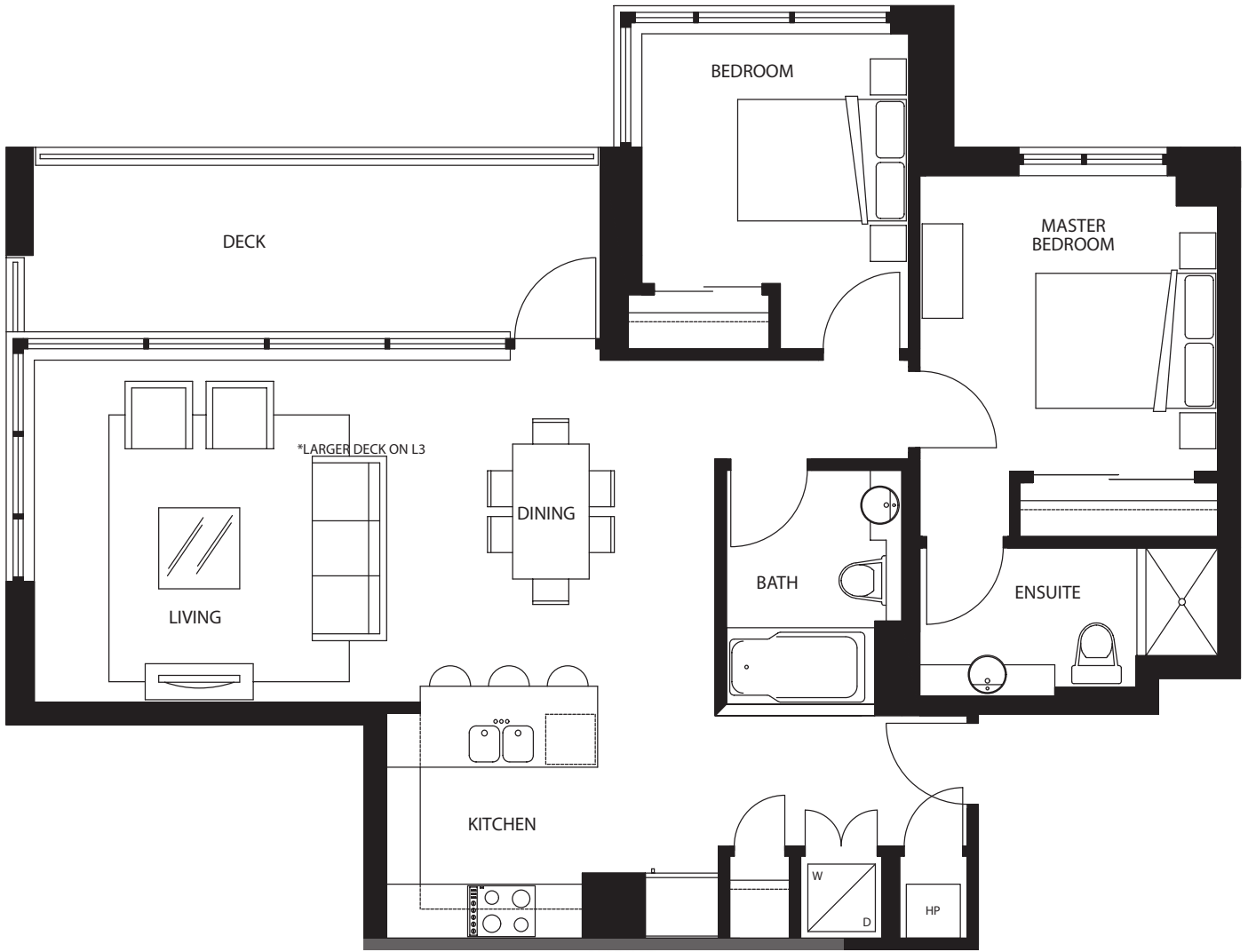
Plan B | Studio

Approximately 482 sq.ft.  
Drawings not to scale

Floorplans may vary with unit location. Square footage is approximate.



AL MARE REALTY



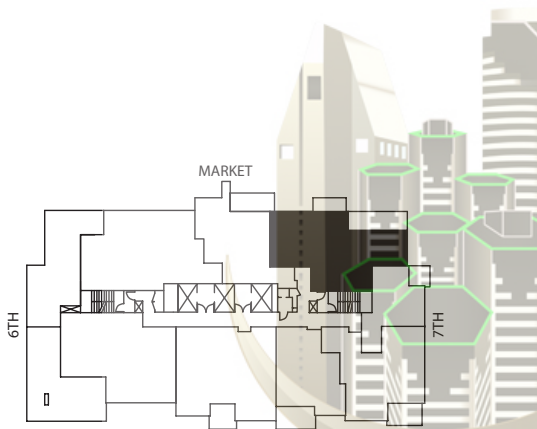
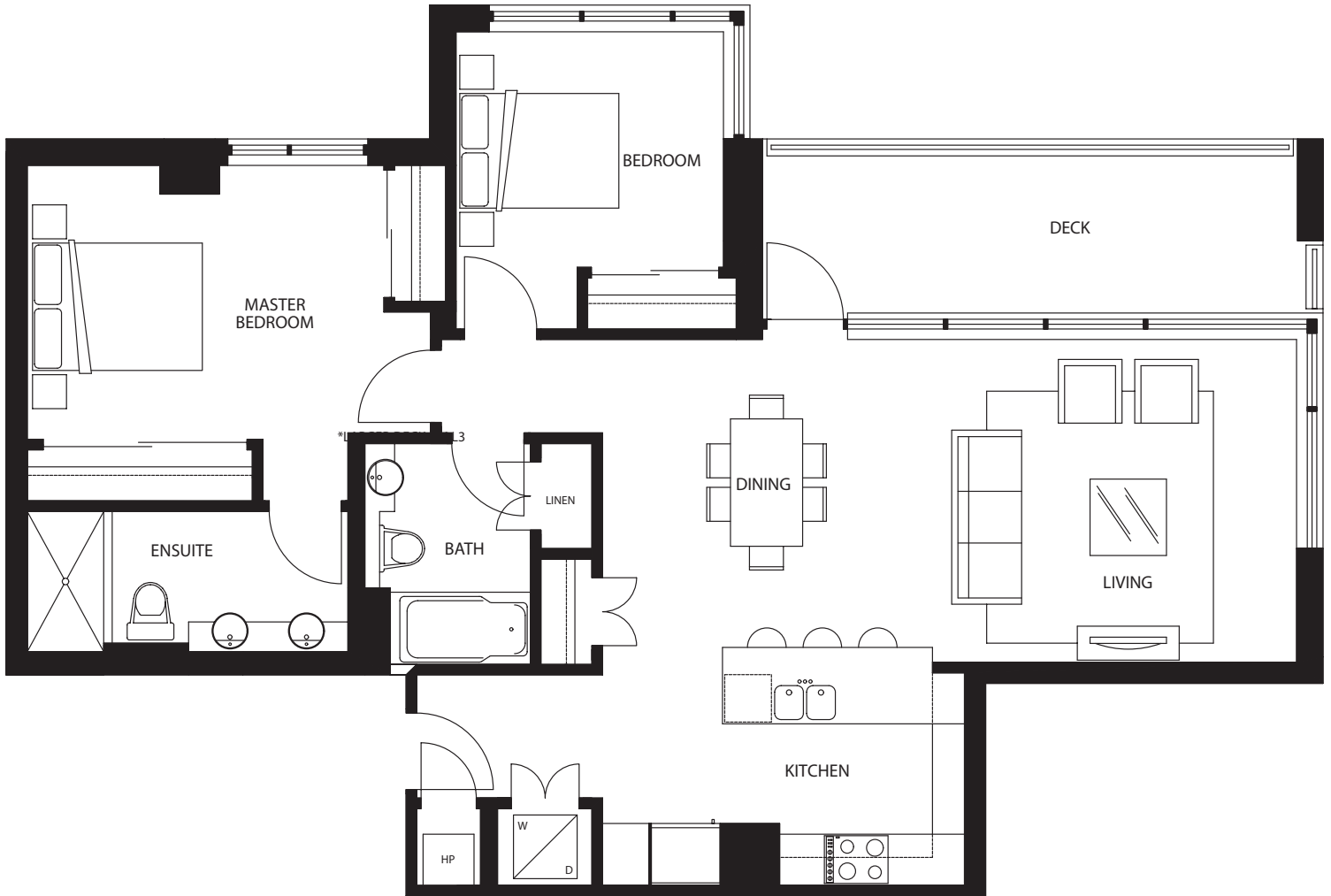
Plan C1 | Two bedroom two bath

Approximately 1,032 sq.ft.  
Drawings not to scale

Floorplans may vary with unit location. Square footage is approximate.



AL MARE REALTY



Plan C2 | Two bedroom two bath

Approximately 1,159 sq.ft.  
Drawings not to scale

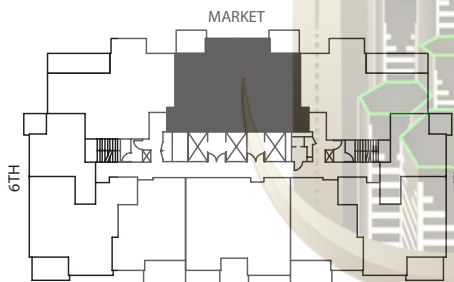
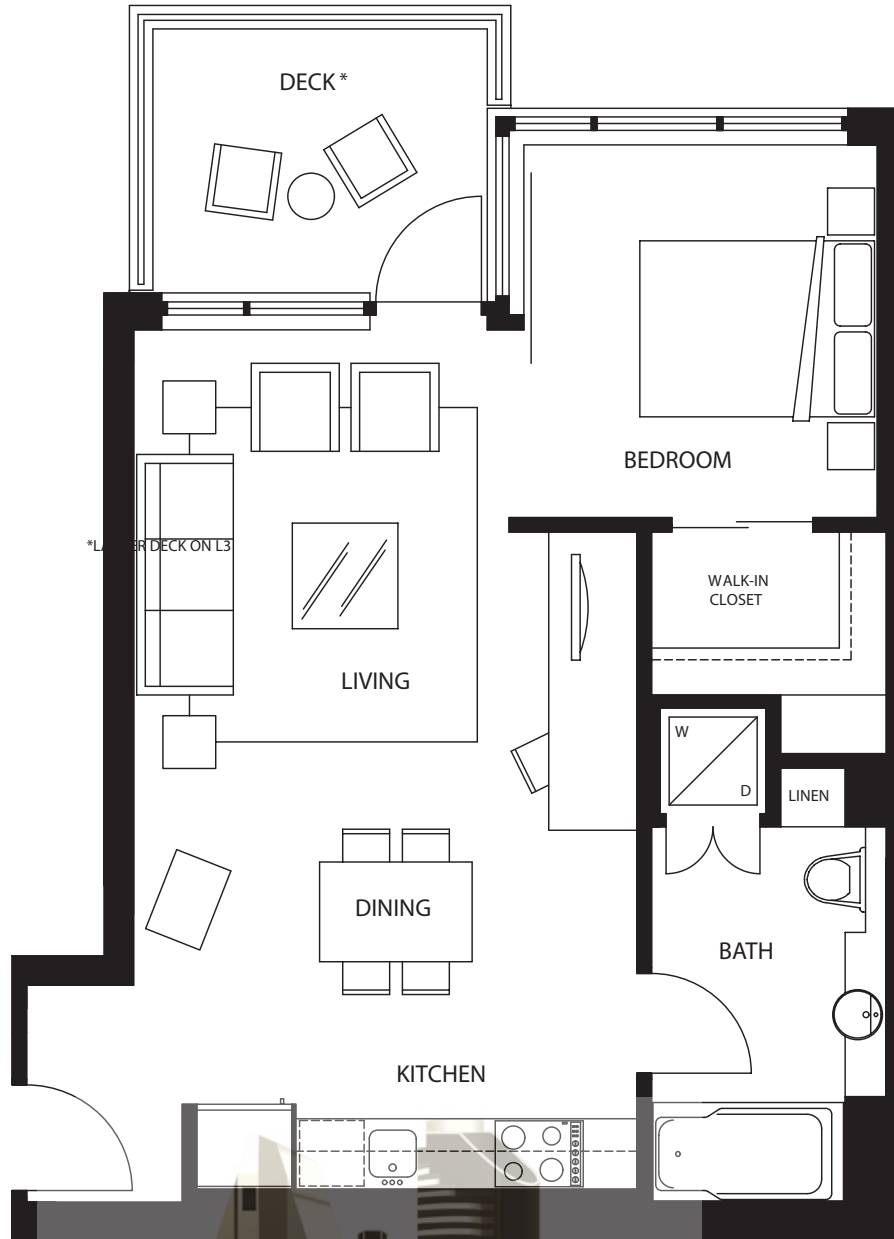
Floorplans may vary with unit location. Square footage is approximate.

ALMAREREALTY.COM info@almarerealty.com t.619 546 6362 c.925 998 0651

MICHAEL LONG  
DOWNTOWN SAN DIEGO REAL ESTATE



AL MARE REALTY



Plan D | One bedroom one bath

Approximately 653 sq.ft.  
Drawings not to scale

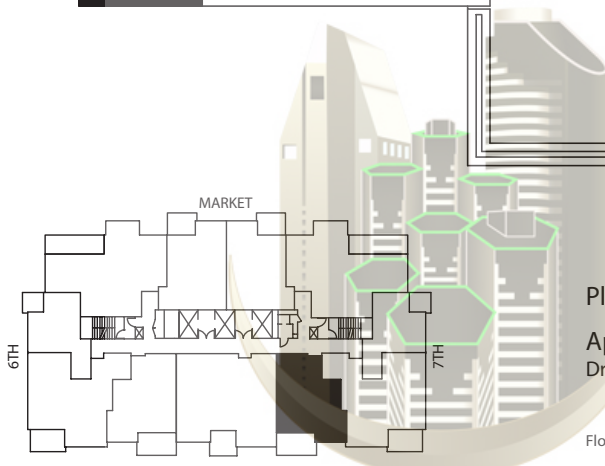
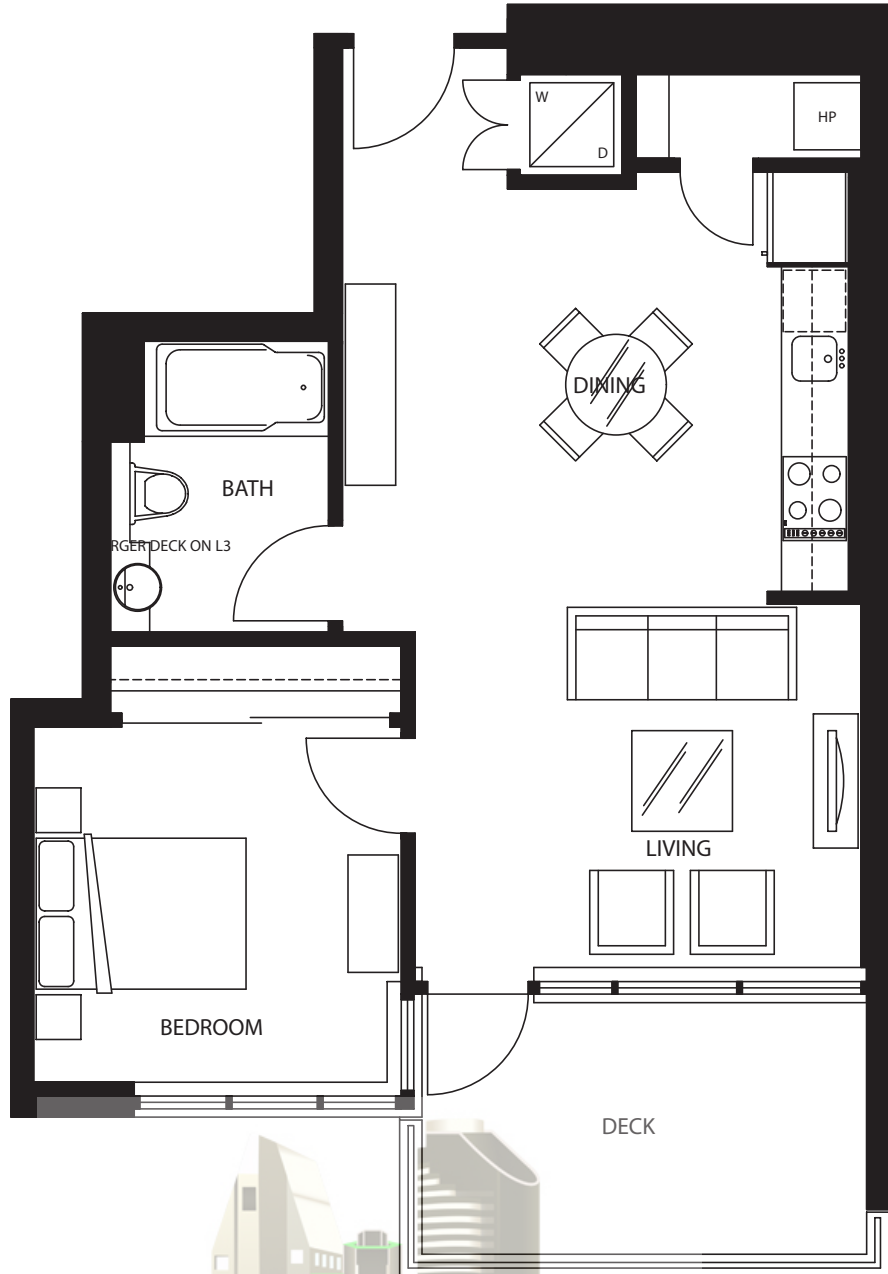
Floorplans may vary with unit location. Square footage is approximate.

ALMAREALTY.COM info@almarerealty.com t.619 546 6362 c.925 998 0651

MICHAEL LONG  
DOWNTOWN SAN DIEGO REAL ESTATE



AL MARE REALTY



Plan E | One bedroom one bath

Approximately 679 sq.ft.  
Drawings not to scale

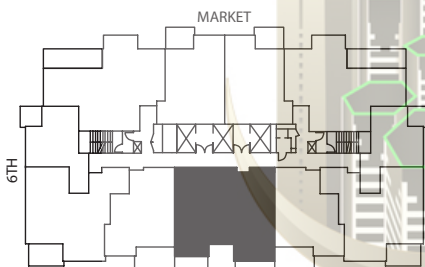
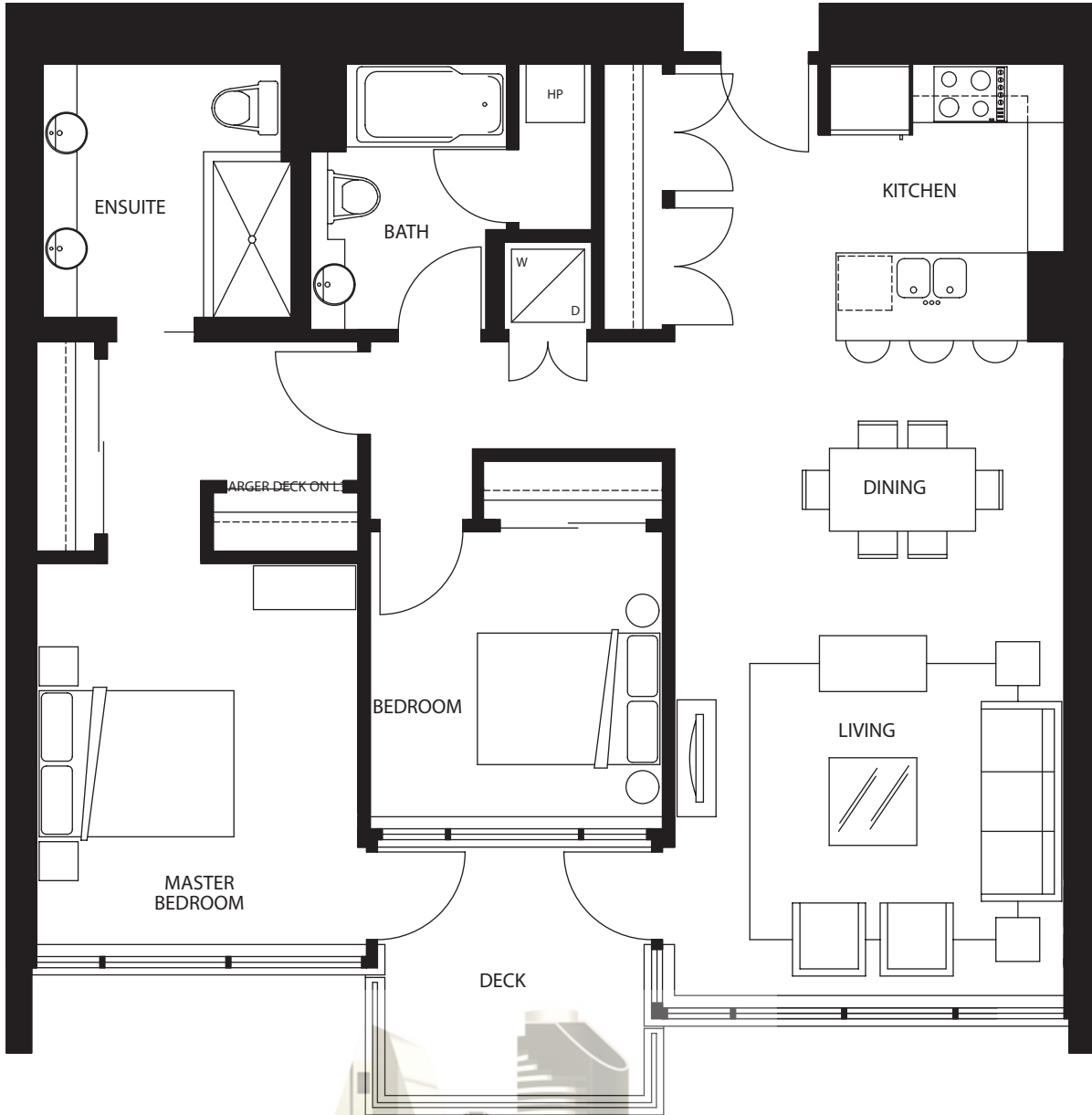
Floorplans may vary with unit location. Square footage is approximate.

ALMAREALTY.COM info@almarerealty.com t.619 546 6362 c.925 998 0651

MICHAEL LONG  
DOWNTOWN SAN DIEGO REAL ESTATE



AL MARE REALTY



Plan F | Two bedroom two bath

Approximately 1,144 sq.ft.  
Drawings not to scale

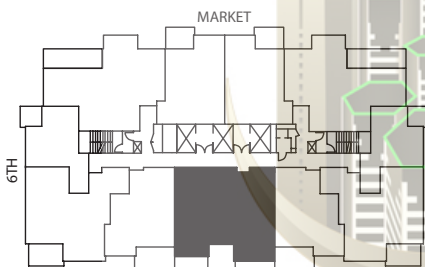
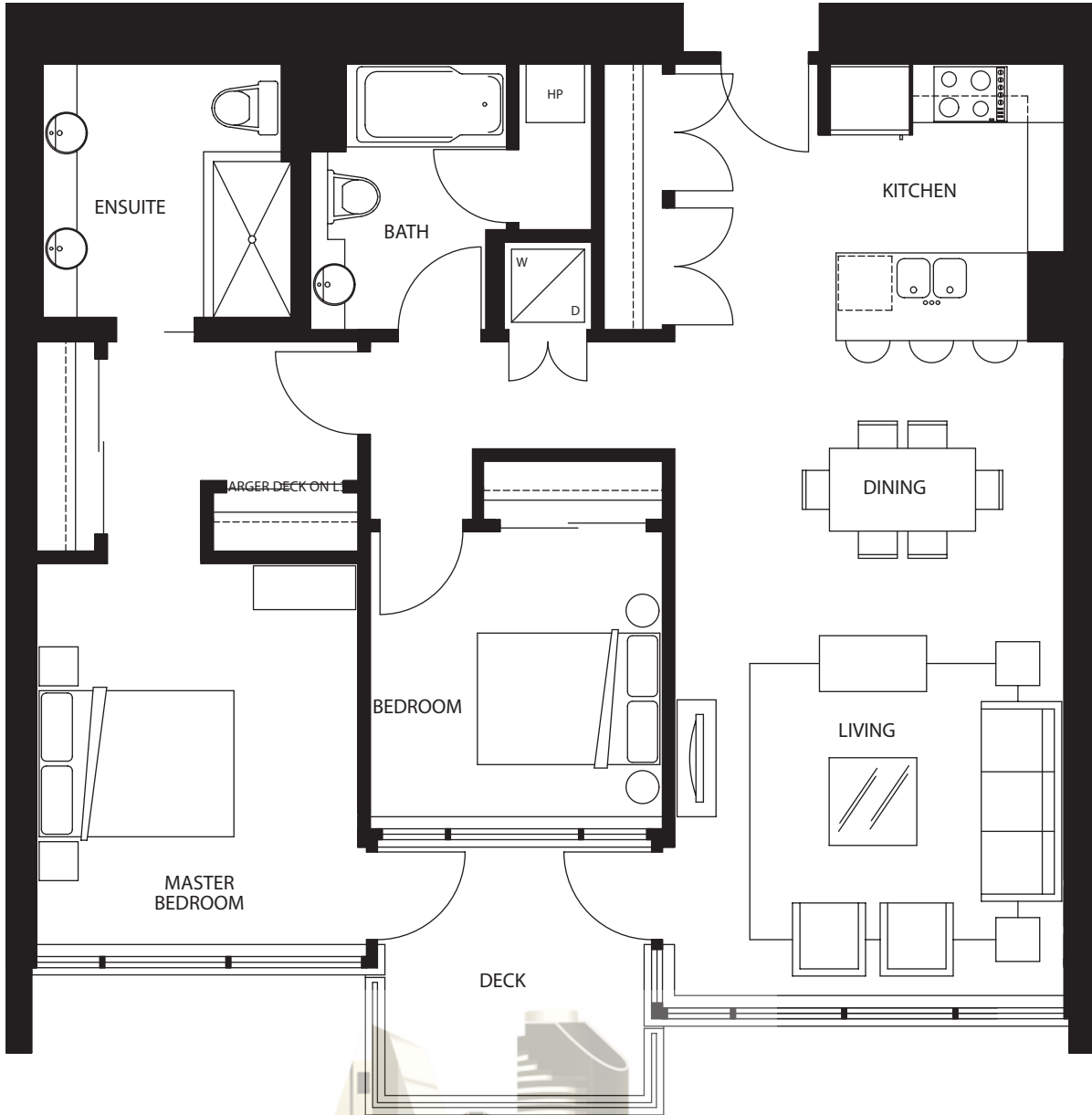
Floorplans may vary with unit location. Square footage is approximate.

ALMAREALTY.COM info@almarerealty.com t.619 546 6362 c.925 998 0651

MICHAEL LONG  
DOWNTOWN SAN DIEGO REAL ESTATE



AL MARE REALTY



Plan F | Two bedroom two bath

Approximately 1,144 sq.ft.  
Drawings not to scale

Floorplans may vary with unit location. Square footage is approximate.

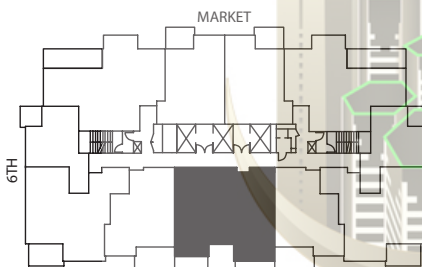
ALMAREREALTY.COM info@almarerealty.com t.619 546 6362 c.925 998 0651

MICHAEL LONG  
DOWNTOWN SAN DIEGO REAL ESTATE





AL MARE REALTY



Plan F | Two bedroom two bath

Approximately 1,144 sq.ft.  
Drawings not to scale

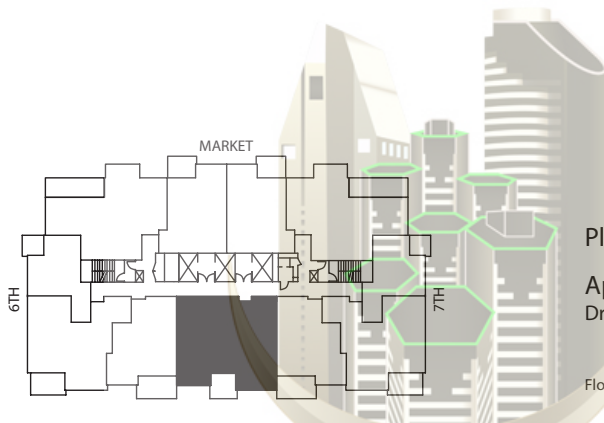
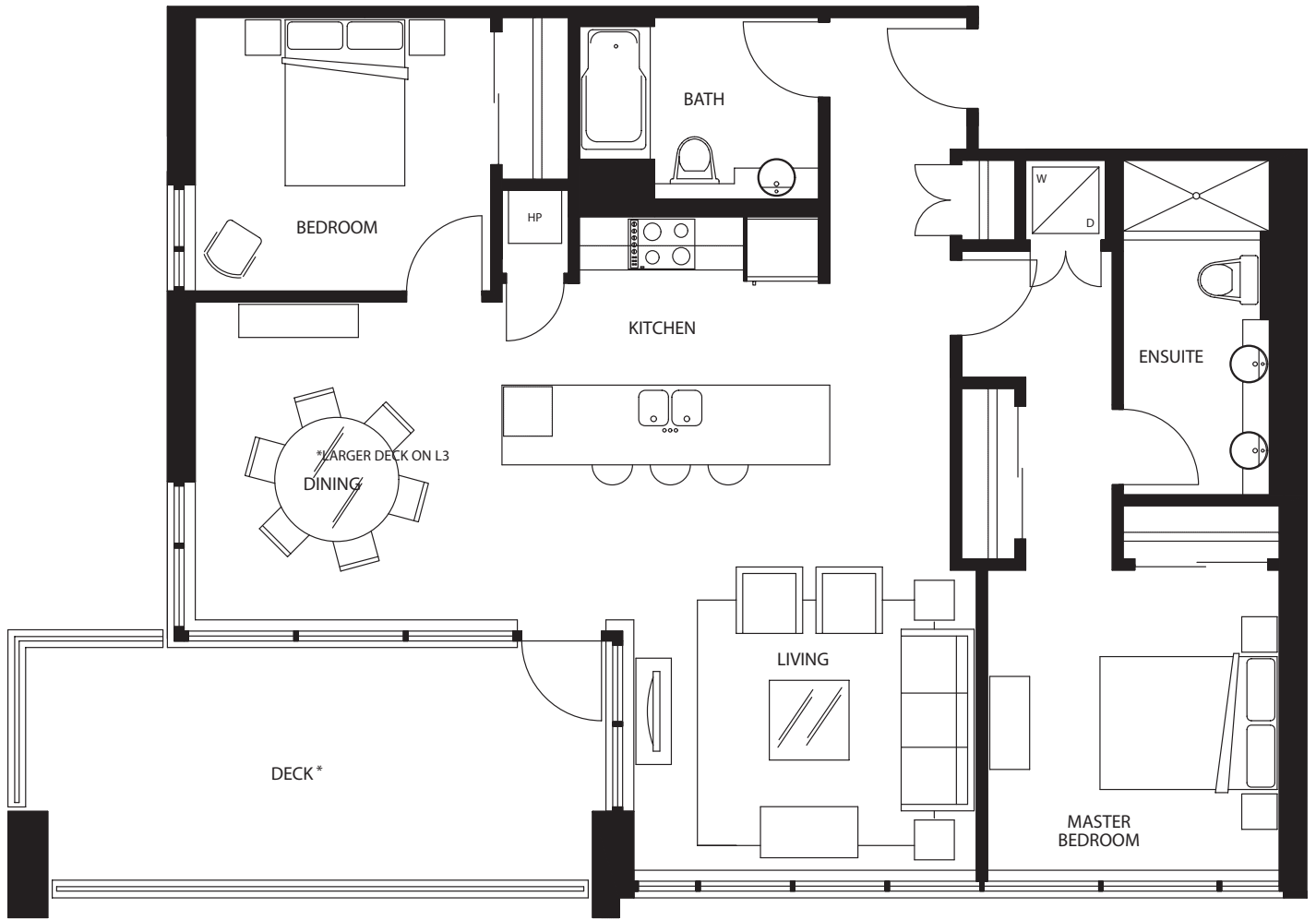
Floorplans may vary with unit location. Square footage is approximate.

ALMAREALTY.COM info@almarerealty.com t.619 546 6362 c.925 998 0651

MICHAEL LONG  
DOWNTOWN SAN DIEGO REAL ESTATE



AL MARE REALTY



Plan G | Two bedroom two bath

Approximately 1,195 sq.ft.

Drawings not to scale

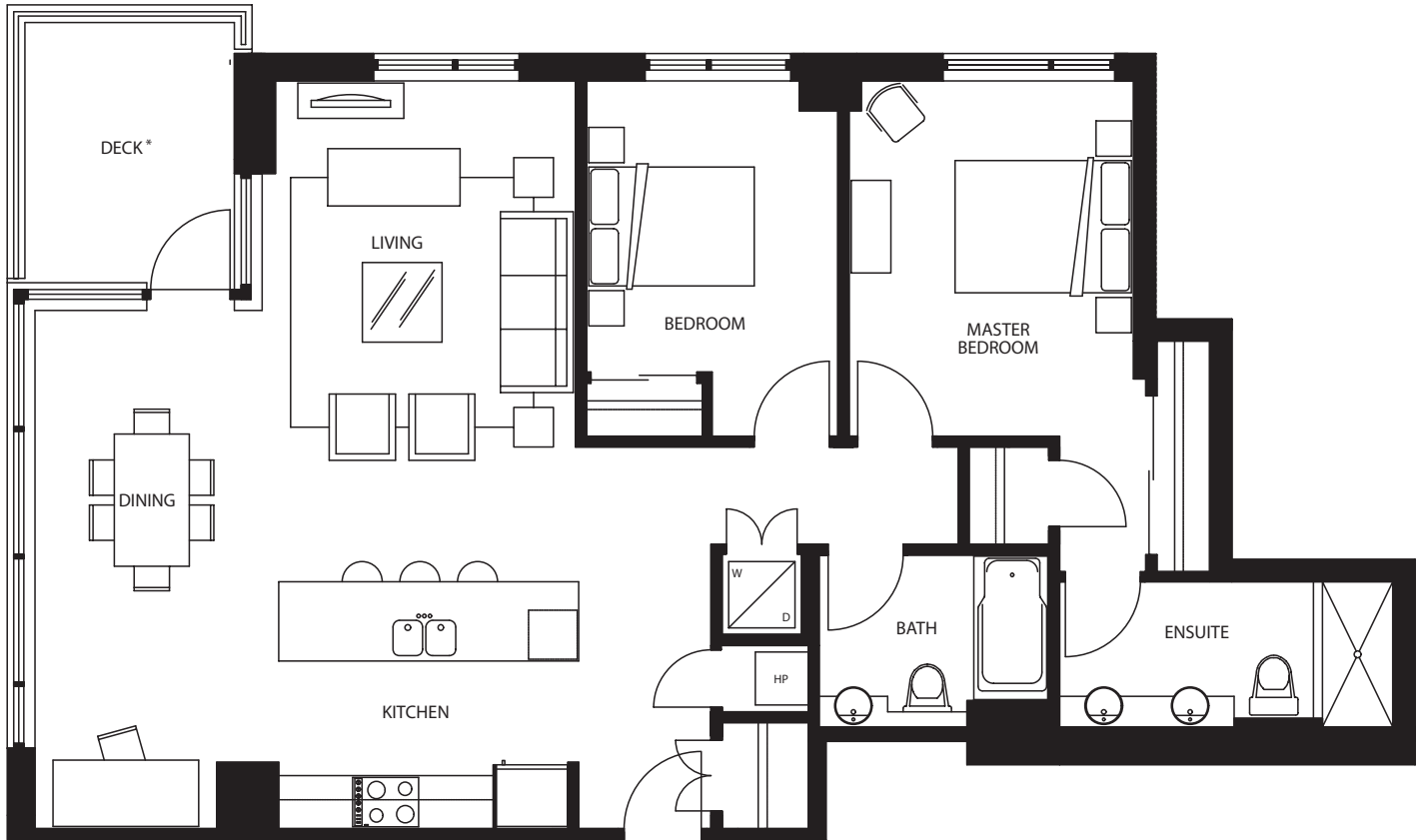
Floorplans may vary with unit location. Square footage is approximate.

ALMAREALTY.COM info@almarerealty.com t.619 546 6362 c.925 998 0651

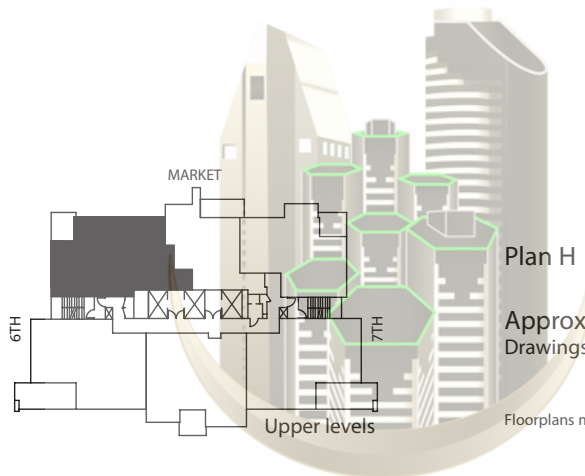
MICHAEL LONG  
DOWNTOWN SAN DIEGO REAL ESTATE



AL MARE REALTY



\*LARGER DECK ON L12



Plan H | Two bedroom two bath

Approximately 1,227 sq.ft.  
Drawings not to scale

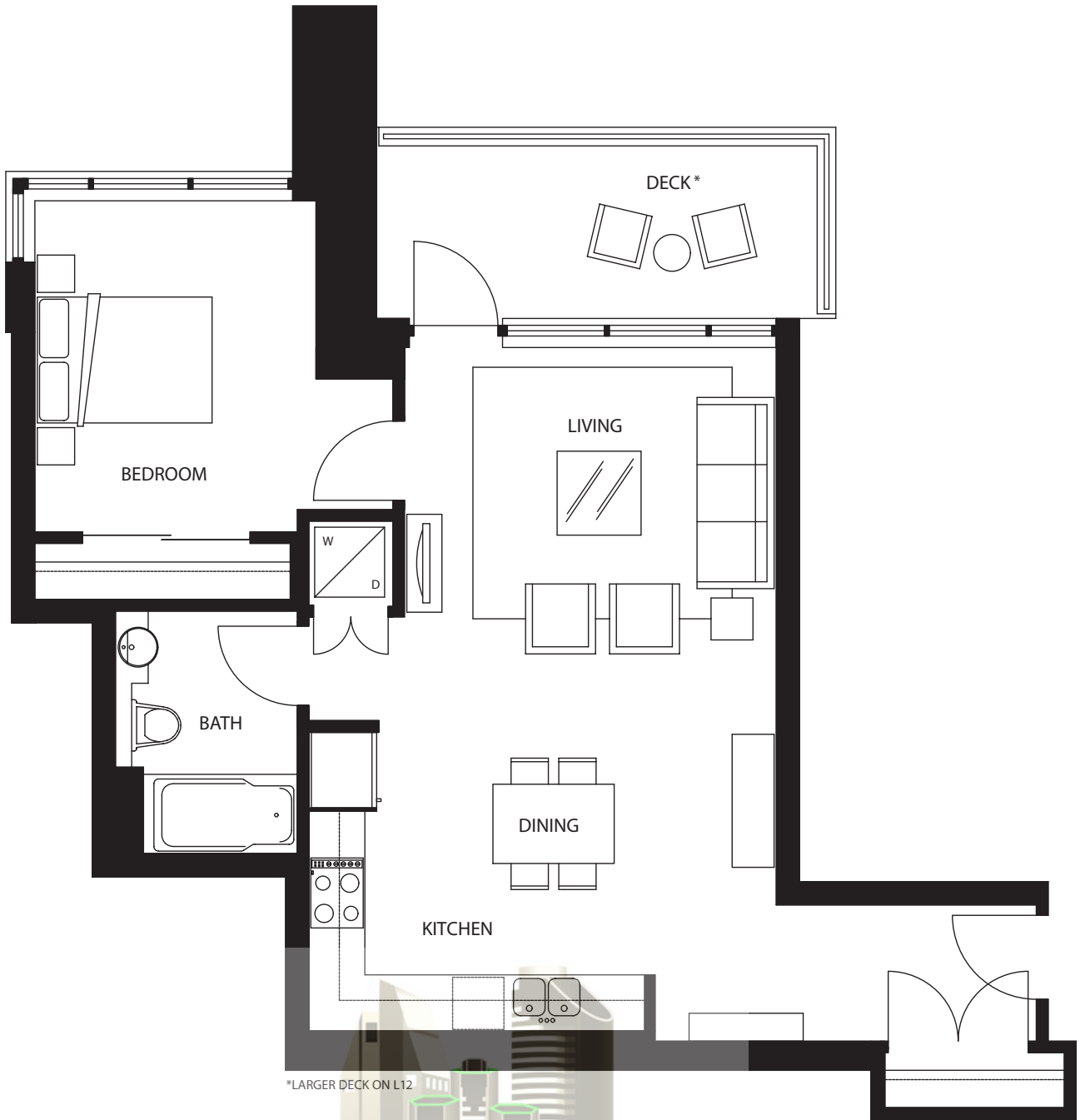
Floorplans may vary with unit location. Square footage is approximate.

ALMAREALTY.COM info@almarerealty.com t.619 546 6362 c.925 998 0651

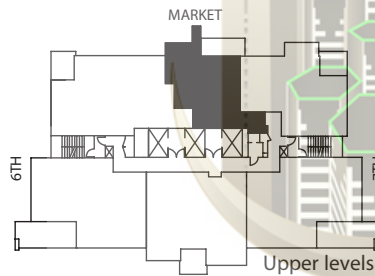
MICHAEL LONG  
DOWNTOWN SAN DIEGO REAL ESTATE



AL MARE REALTY



\*LARGER DECK ON L12



Plan K | One bedroom one bath

Approximately 750 sq.ft.  
Drawings not to scale

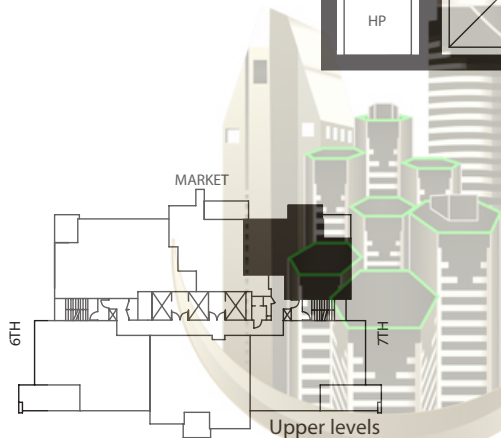
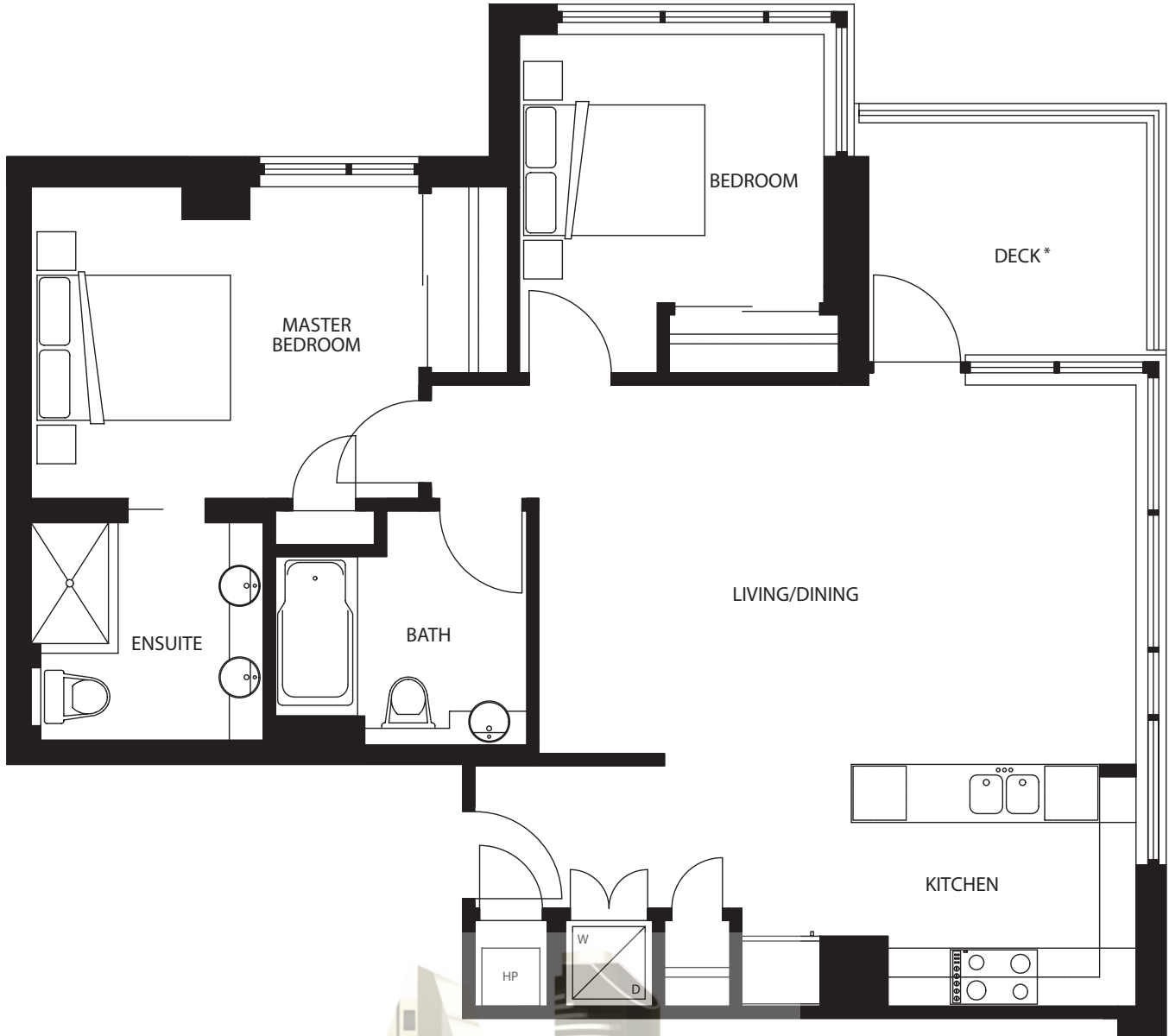
Floorplans may vary with unit location. Square footage is approximate.

ALMAREREALTY.COM info@almarerealty.com t.619 546 6362 c.925 998 0651

MICHAEL LONG  
DOWNTOWN SAN DIEGO REAL ESTATE



AL MARE REALTY



Plan L | Two bedroom two bath

Approximately 1,013 sq.ft.

Drawings not to scale

Floorplans may vary with unit location. Square footage is approximate.