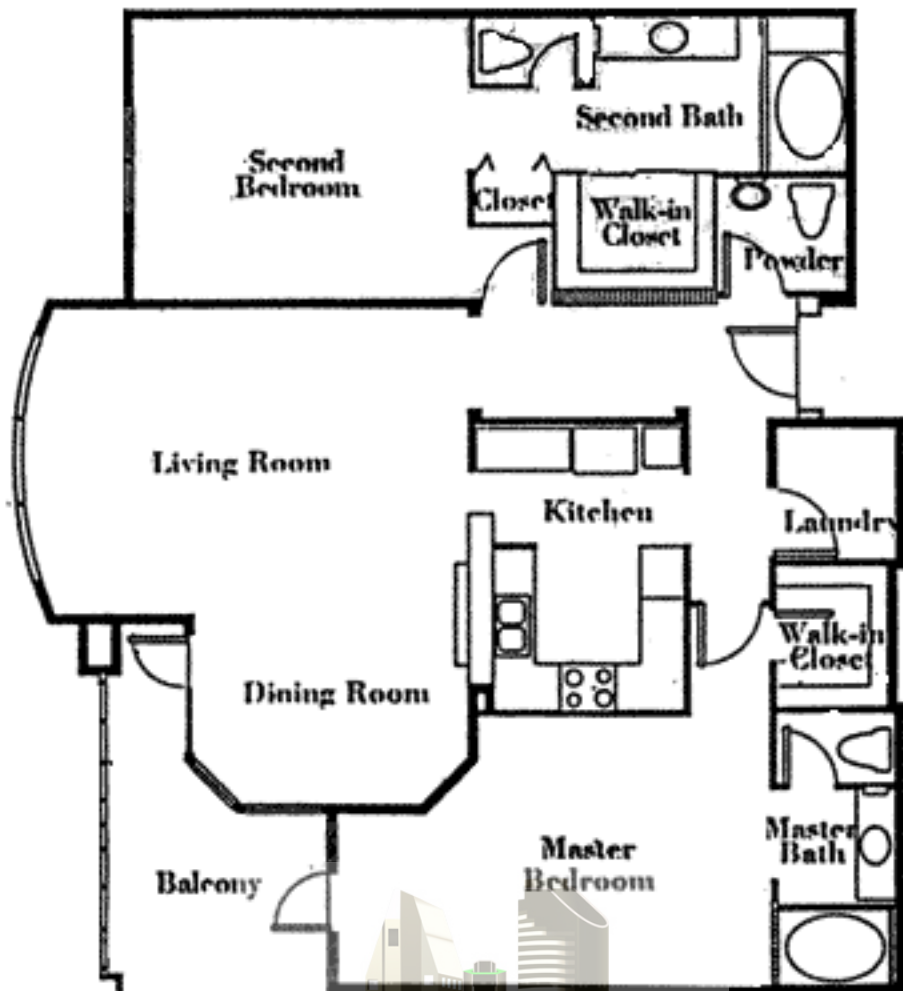


## THE EDGEWATER

1056 sq. ft. unit size

104 sq. ft. average deck size

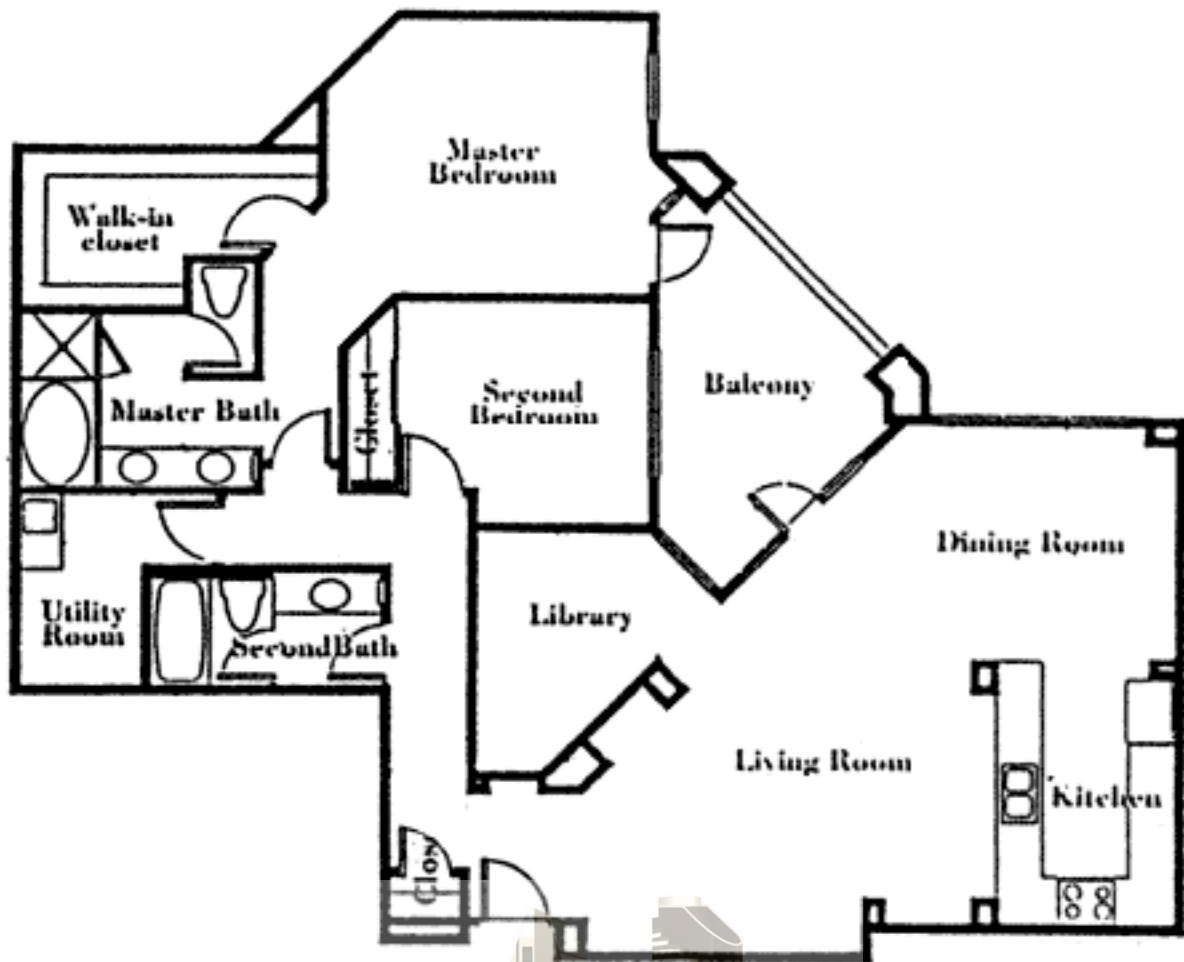


## THE EMBARCADERO

1445 sq. ft. unit size

119 sq. ft. average deck size

MICHAEL LONG  
DOWNTOWN SAN DIEGO REAL ESTATE

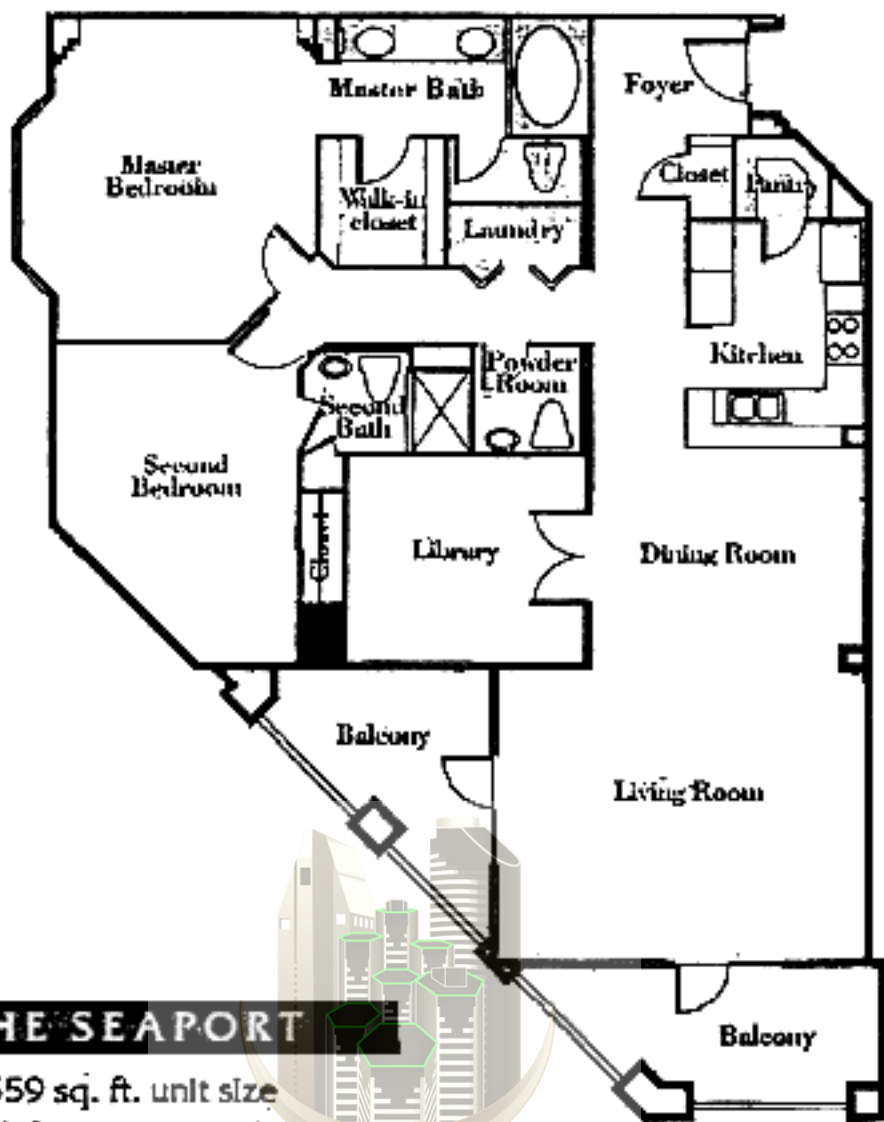


## THE PORTSIDE

1550 sq. ft. unit size

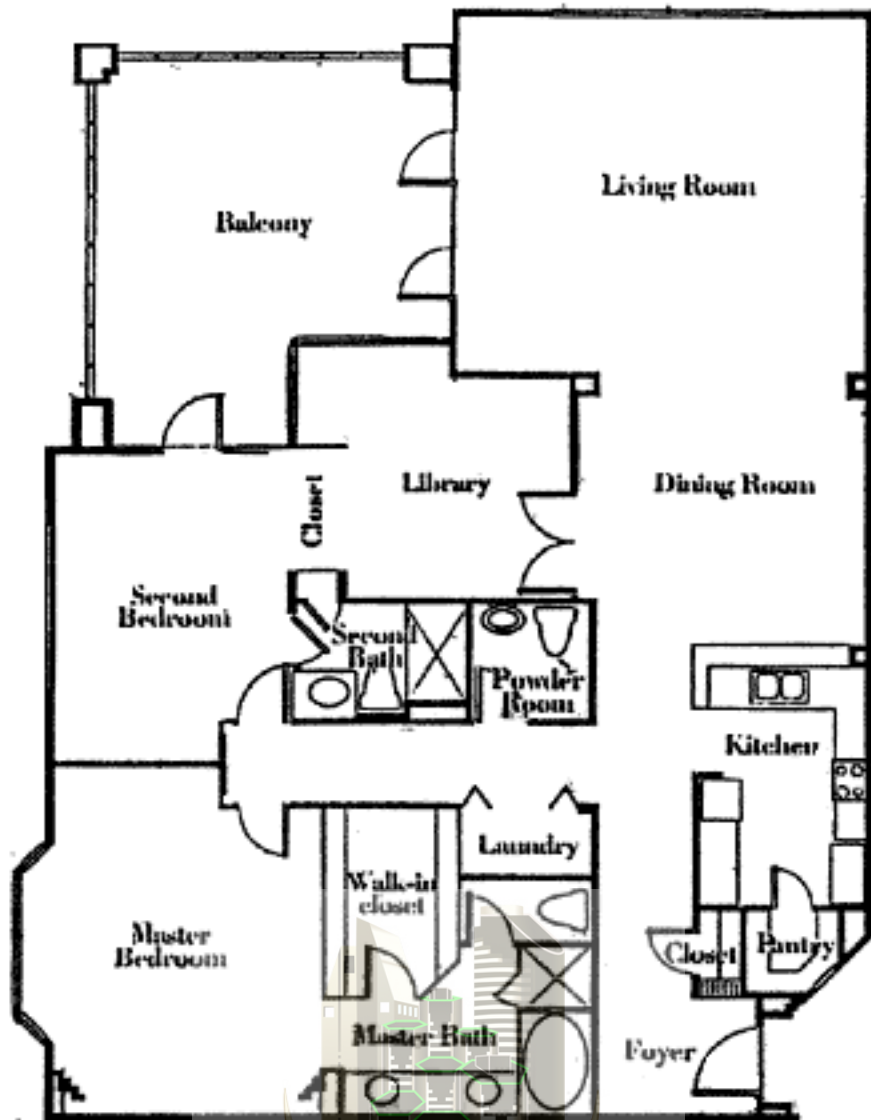
140 sq. ft. average deck size

**MICHAEL LONG**  
DOWNTOWN SAN DIEGO REAL ESTATE



## THE SEAPORT

1559 sq. ft. unit size  
174 sq. ft. average deck size



## THE TIDEWATER

1782 sq. ft. unit size  
290 sq. ft. average deck size

MICHAEL LONG  
DOWNTOWN SAN DIEGO REAL ESTATE



## THE WATERFRONT

1st floor - 1720 sq. ft. unit size

136 sq. ft. average deck size

2nd, 3rd, and 4th floors - 1800 sq. ft. unit size

135 sq. ft. average deck size